

NOTE :

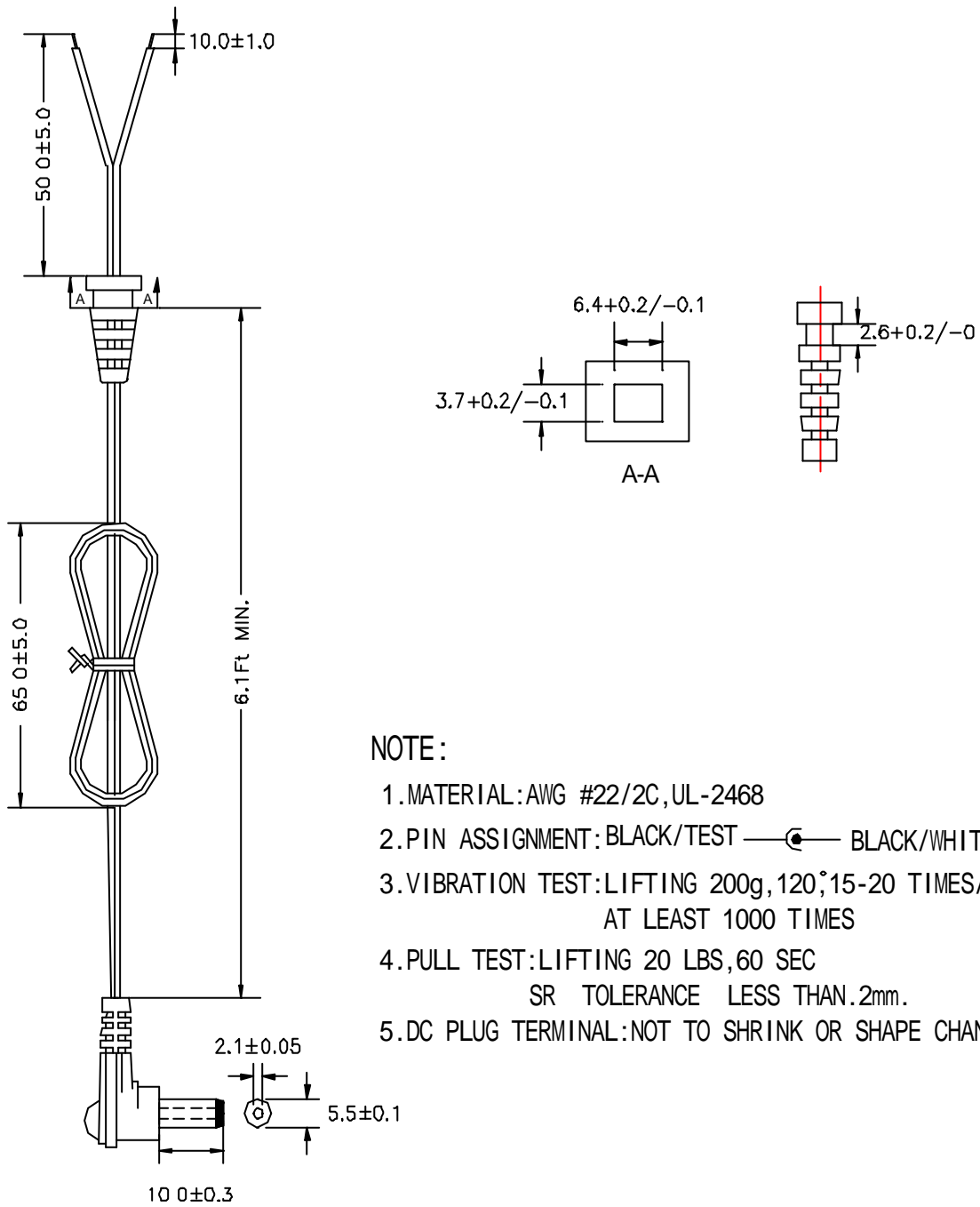
1. MATERIAL: AWG #22/2C, UL-2468
2. PIN ASSIGNMENT: BLACK/TEST —●— BLACK/WHITE LINE
3. VIBRATION TEST: LIFTING 200g, 120°, 15-20 TIMES/MIN AT LEAST 1000 TIMES
4. PULL TEST: LIFTING 20 LBS, 60 SEC
SR TOLERANCE LESS THAN .2mm.
5. DC PLUG TERMINAL: NOT TO SHRINK OR SHAPE CHANGED

SL Spec Lin Enterprise Co., Ltd.


EI-41-1

2F, No. 6, Alley 17, Lane 42, Chung Hsing N. St., San Chung City, Taipei Hsien, Taiwan, R.O.C

TEL : 886-2-2999-1395 FAX : 886-2-2278-1629 Email : speclin@ms22.hinet.net



NOTE :

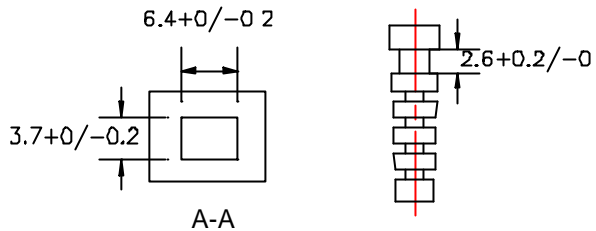
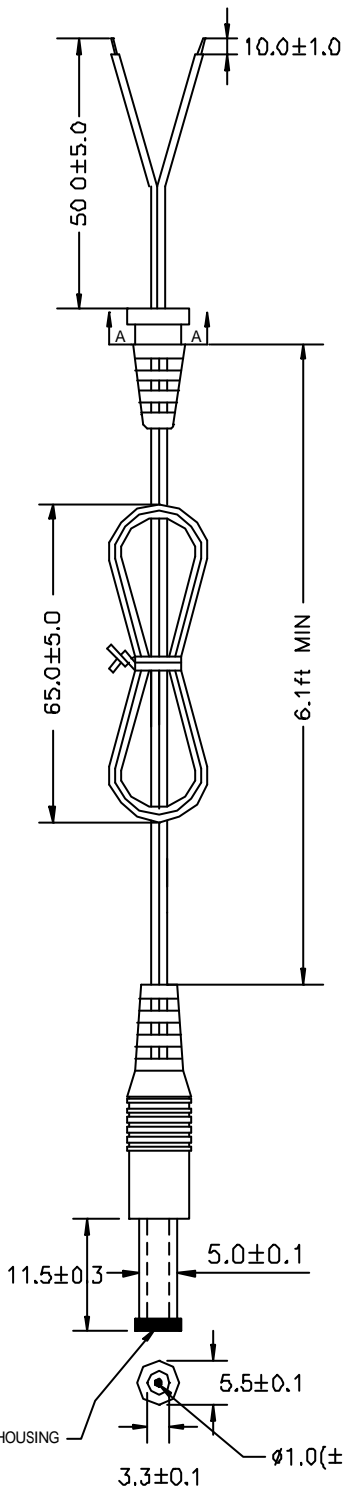
1. MATERIAL: AWG #22/2C, UL-2468
2. PIN ASSIGNMENT: BLACK/TEST —  — BLACK/WHITE LINE
3. VIBRATION TEST: LIFTING 200g, 120°, 15-20 TIMES/MIN AT LEAST 1000 TIMES
4. PULL TEST: LIFTING 20 LBS, 60 SEC
SR TOLERANCE LESS THAN .2mm.
5. DC PLUG TERMINAL: NOT TO SHRINK OR SHAPE CHANGED

SL Spec Lin Enterprise Co., Ltd.

2F, No. 6, Alley 17, Lane 42, Chung Hsing N. St., San Chung City, Taipei Hsien, Taiwan, R.O.C

TEL : 886-2-2999-1395 FAX : 886-2-2278-1629 Email : speclin@ms22.hinet.net

EI-41-2



NOTE :

1. MATERIAL: AWG #24/2C, UL-2468
2. PIN ASSIGNMENT: BLACK/TEST —●— BLACK/WHITE LINE
3. VIBRATION TEST: LIFTING 200g, 120°, 15-20 TIMES/MIN AT LEAST 1000 TIMES
4. PULL TEST: LIFTING 20 LBS, 60 SEC
SR TOLERANCE LESS THAN 2mm
5. DC PLUG TERMINAL: NOT TO SHRINK OR SHAPE CHANGED

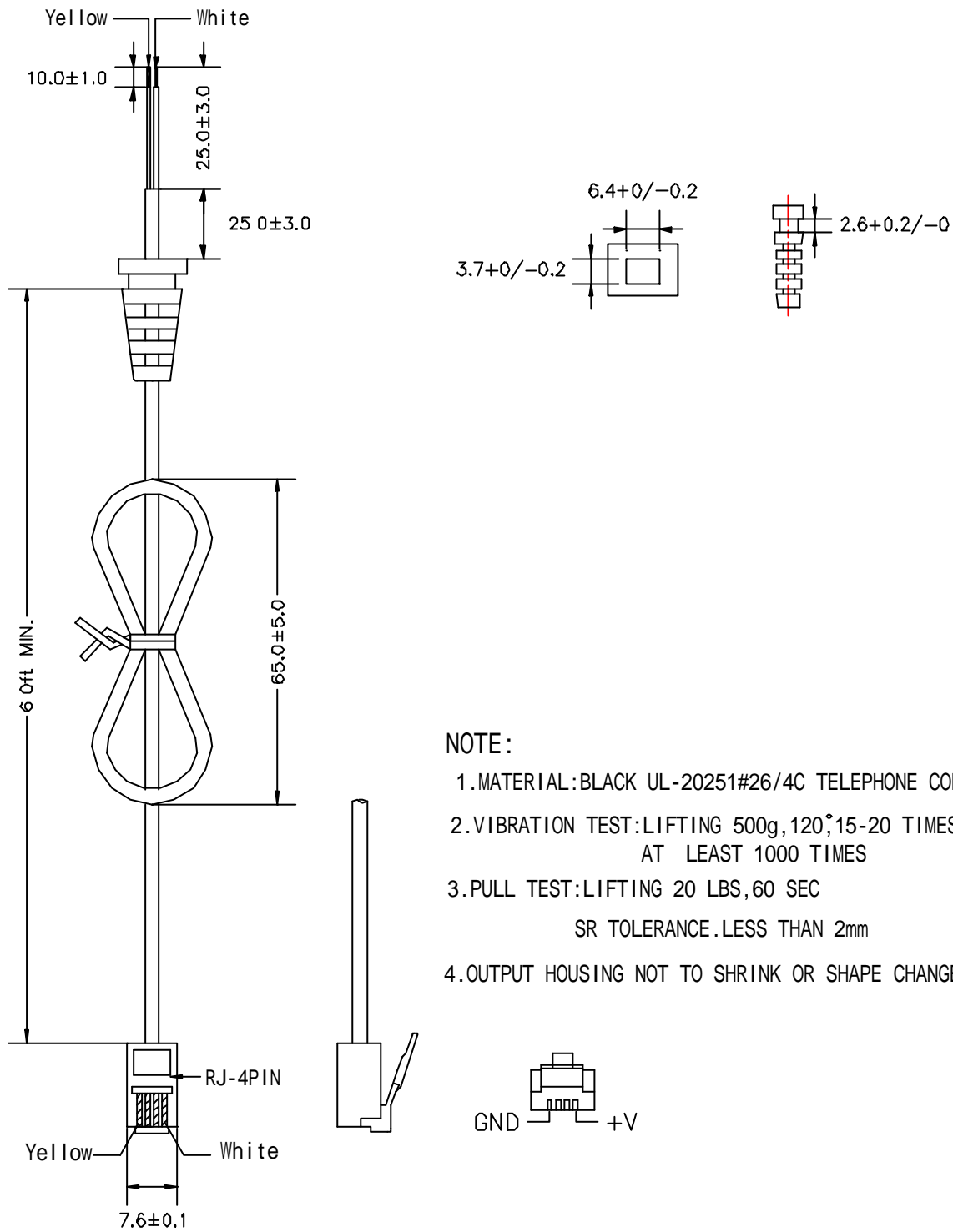
YELLOW PLUG HOUSING

SL Spec Lin Enterprise Co., Ltd.

EI-41-3

2F, No. 6, Alley 17, Lane 42, Chung Hsing N. St., San Chung City, Taipei Hsien, Taiwan, R.O.C

TEL : 886-2-2999-1395 FAX : 886-2-2278-1629 Email : speclin@ms22.hinet.net



NOTE:

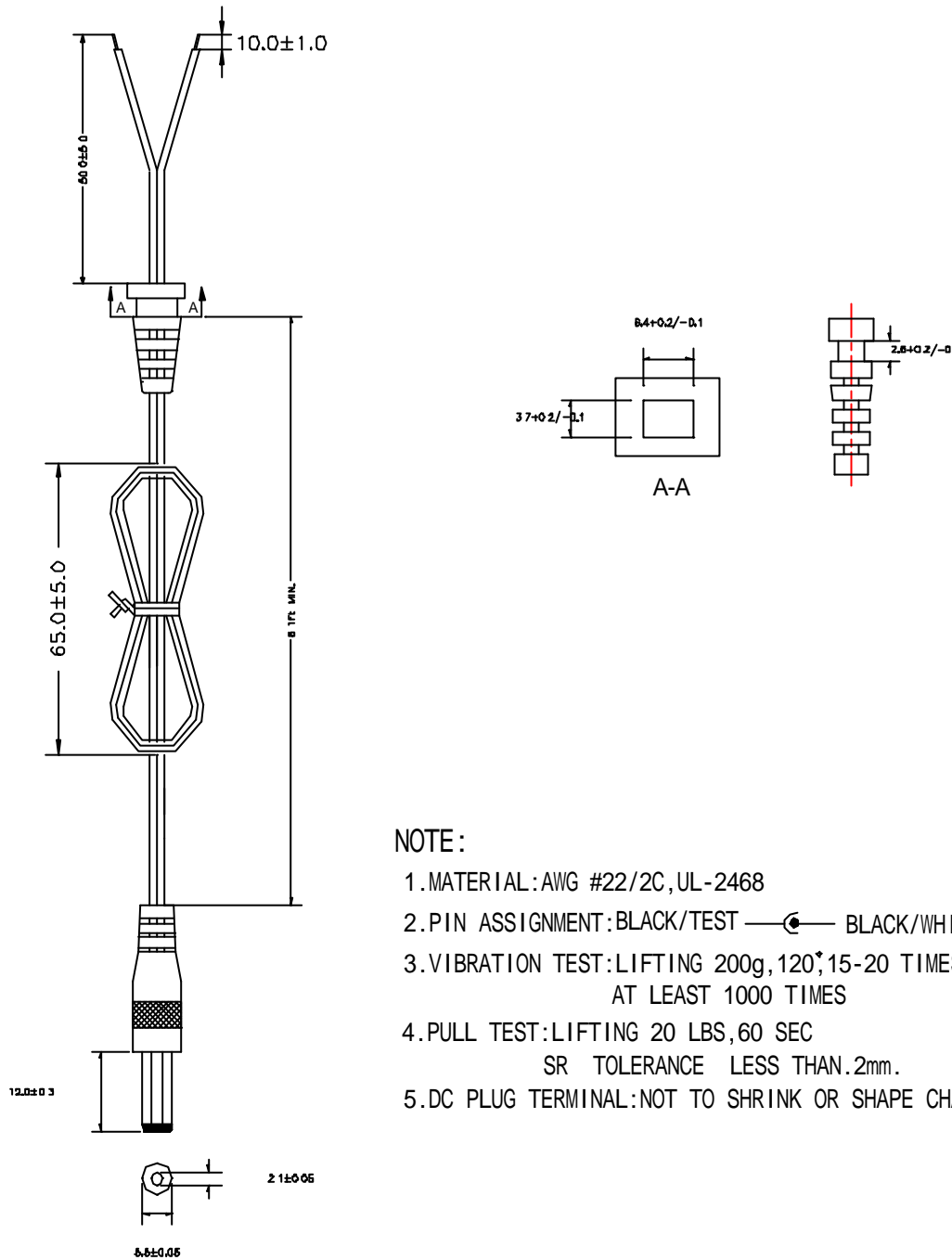
1. MATERIAL: BLACK UL-20251#26/4C TELEPHONE CONNECTOR
2. VIBRATION TEST: LIFTING 500g, 120°, 15-20 TIMES/MIN AT LEAST 1000 TIMES
3. PULL TEST: LIFTING 20 LBS, 60 SEC SR TOLERANCE. LESS THAN 2mm
4. OUTPUT HOUSING NOT TO SHRINK OR SHAPE CHANGED

SL Spec Lin Enterprise Co., Ltd.

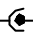
2F, No. 6, Alley 17, Lane 42, Chung Hsing N. St., San Chung City, Taipei Hsien, Taiwan, R.O.C

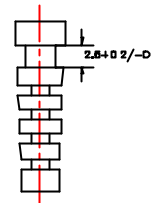
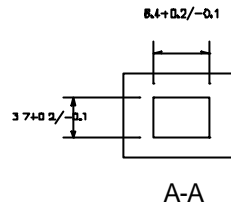
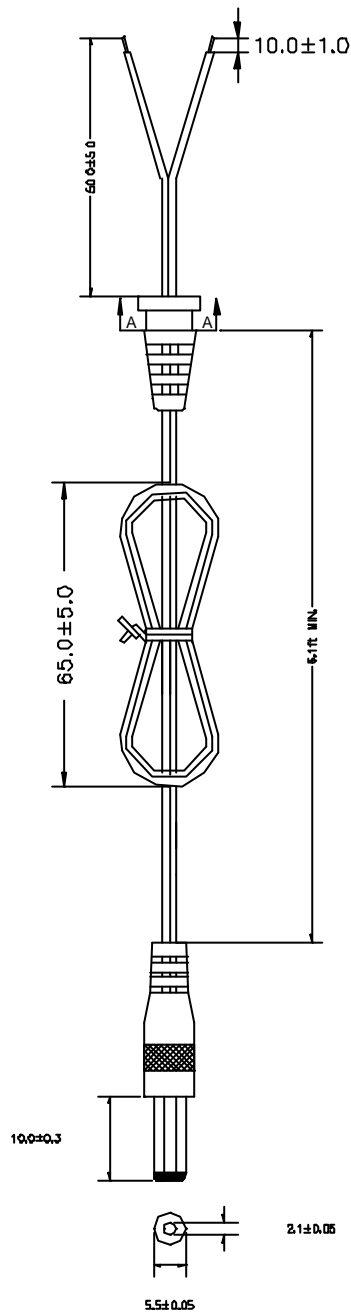
TEL : 886-2-2999-1395 FAX : 886-2-2278-1629 Email : speclin@ms22.hinet.net

EI-41-4



NOTE :

1. MATERIAL : AWG #22/2C, UL-2468
2. PIN ASSIGNMENT : BLACK/TEST —  — BLACK/WHITE LINE
3. VIBRATION TEST : LIFTING 200g, 120°, 15-20 TIMES/MIN AT LEAST 1000 TIMES
4. PULL TEST : LIFTING 20 LBS, 60 SEC
SR TOLERANCE LESS THAN .2mm.
5. DC PLUG TERMINAL : NOT TO SHRINK OR SHAPE CHANGED



NOTE :

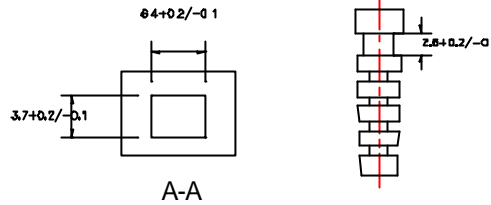
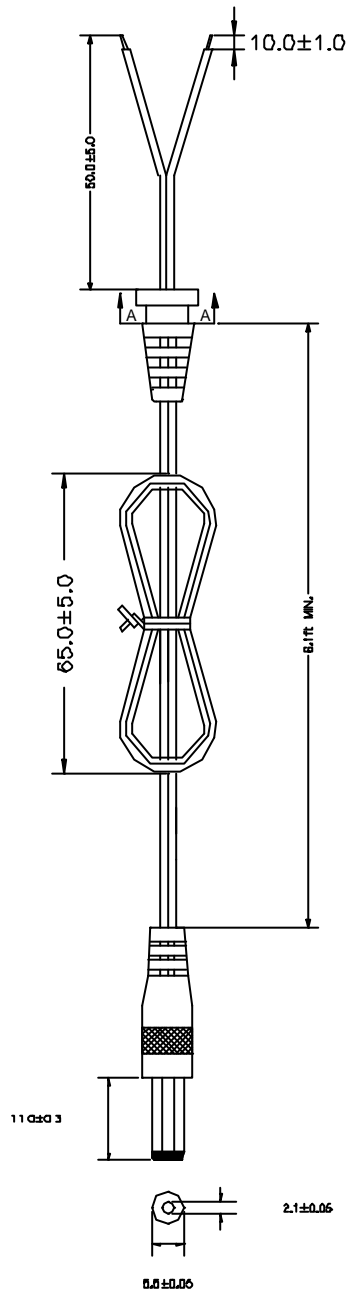
1. MATERIAL : AWG #22/2C, UL-2468
2. PIN ASSIGNMENT : BLACK/TEST —●— BLACK/WHITE LINE
3. VIBRATION TEST : LIFTING 200g, 120°, 15-20 TIMES/MIN AT LEAST 1000 TIMES
4. PULL TEST : LIFTING 20 LBS, 60 SEC
SR TOLERANCE LESS THAN .2mm.
5. DC PLUG TERMINAL : NOT TO SHRINK OR SHAPE CHANGED

SL Spec Lin Enterprise Co., Ltd.

2F, No. 6, Alley 17, Lane 42, Chung Hsing N. St., San Chung City, Taipei Hsien, Taiwan, R.O.C

TEL : 886-2-2999-1395 FAX : 886-2-2278-1629 Email : speclin@ms22.hinet.net

EI-41-6



NOTE :

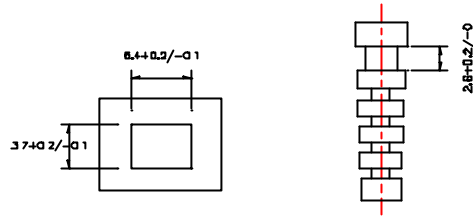
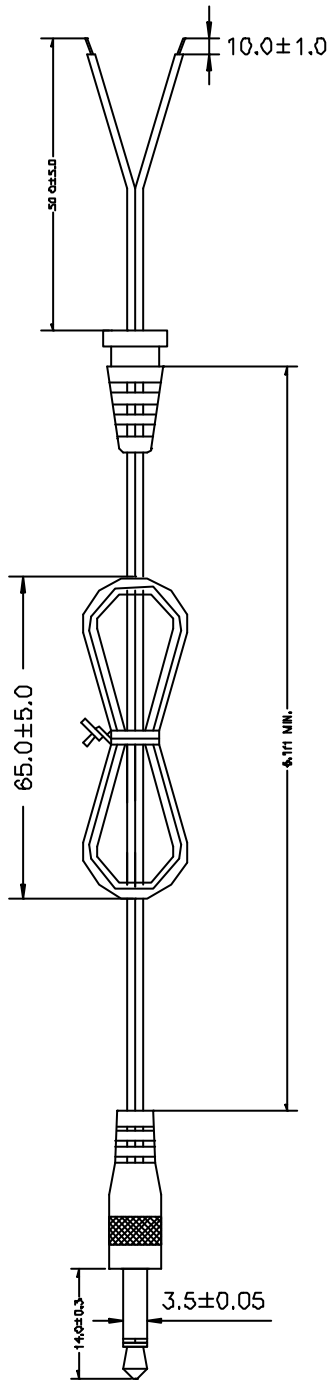
1. MATERIAL : AWG #22/2C, UL-2468
2. PIN ASSIGNMENT : BLACK/TEST — BLACK/WHITE LINE
3. VIBRATION TEST : LIFTING 200g, 120', 15-20 TIMES/MIN AT LEAST 1000 TIMES
4. PULL TEST : LIFTING 20 LBS, 60 SEC
SR TOLERANCE LESS THAN .2mm.
5. DC PLUG TERMINAL : NOT TO SHRINK OR SHAPE CHANGED

SL Spec Lin Enterprise Co., Ltd.

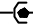
2F, No. 6, Alley 17, Lane 42, Chung Hsing N. St., San Chung City, Taipei Hsien, Taiwan, R.O.C

TEL : 886-2-2999-1395 FAX : 886-2-2278-1629 Email : speclin@ms22.hinet.net

EI-41-7



NOTE :

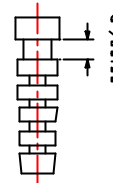
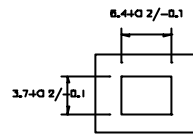
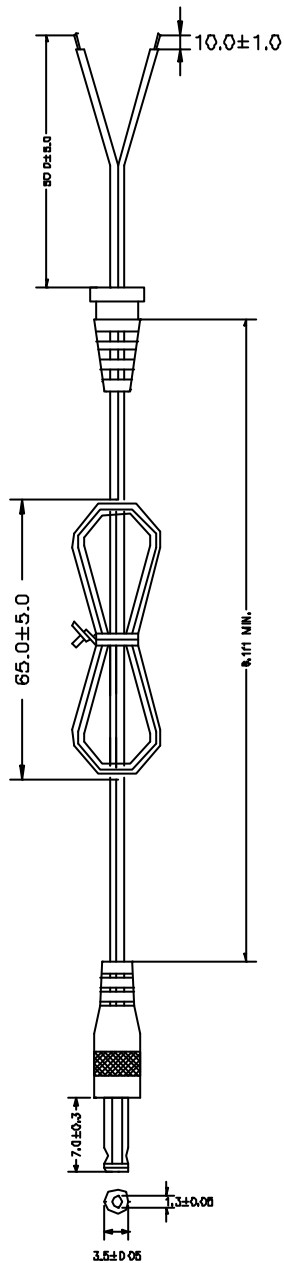
1. MATERIAL : AWG #22/2C, UL-2468
2. PIN ASSIGNMENT : BLACK/TEST —  BLACK/WHITE LINE
3. VIBRATION TEST : LIFTING 500g, 120°, 15-20 TIMES/MIN AT LEAST 1000 TIMES
4. PULL TEST : LIFTING 20 LBS, 60 SEC
SR TOLERANCE LESS THAN .2mm.
5. DC PLUG TERMINAL : NOT TO SHRINK OR SHAPE CHANGED

SL Spec Lin Enterprise Co., Ltd.


2F, No. 6, Alley 17, Lane 42, Chung Hsing N. St., San Chung City, Taipei Hsien, Taiwan, R.O.C

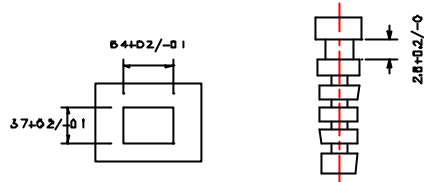
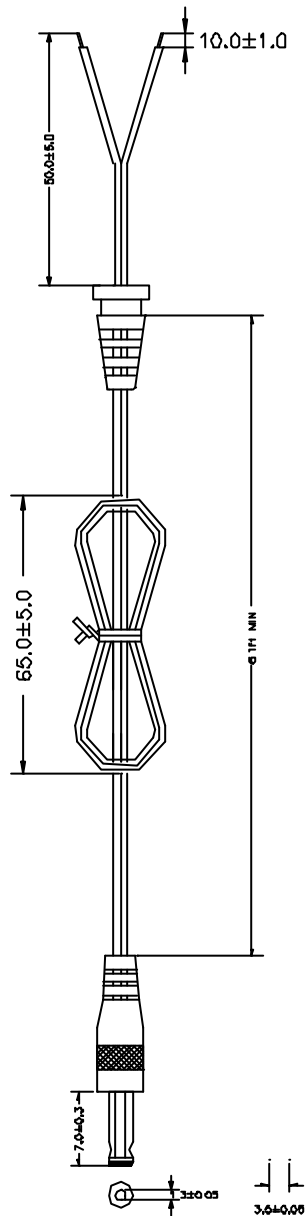
TEL : 886-2-2999-1395 FAX : 886-2-2278-1629 Email : speclin@ms22.hinet.net

EI-41-8



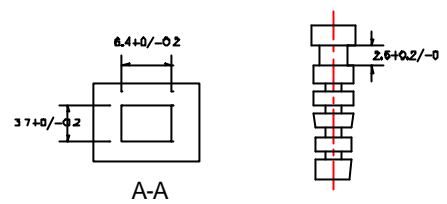
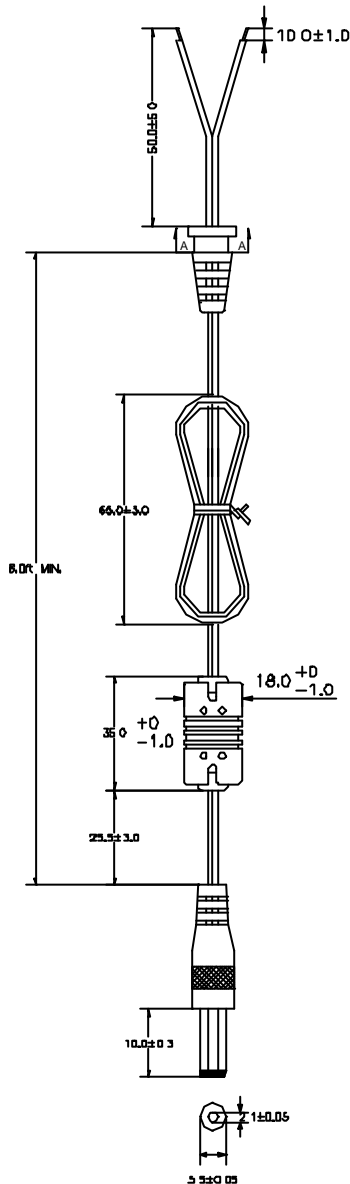
NOTE :

1. MATERIAL : AWG #22/2C , UL - 2468
2. PIN ASSIGNMENT : BLACK/TEST —  BLACK/WHITE LINE
3. VIBRATION TEST : LIFTING 500g, 120°, 15-20 TIMES/MIN
AT LEAST 1000 TIMES
4. PULL TEST : LIFTING 20 LBS, 60 SEC
SR TOLERANCE LESS THAN .2mm.
5. DC PLUG TERMINAL : NOT TO SHRINK OR SHAPE CHANGED




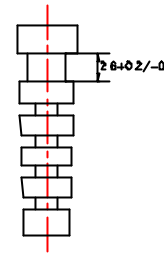
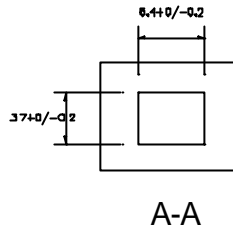
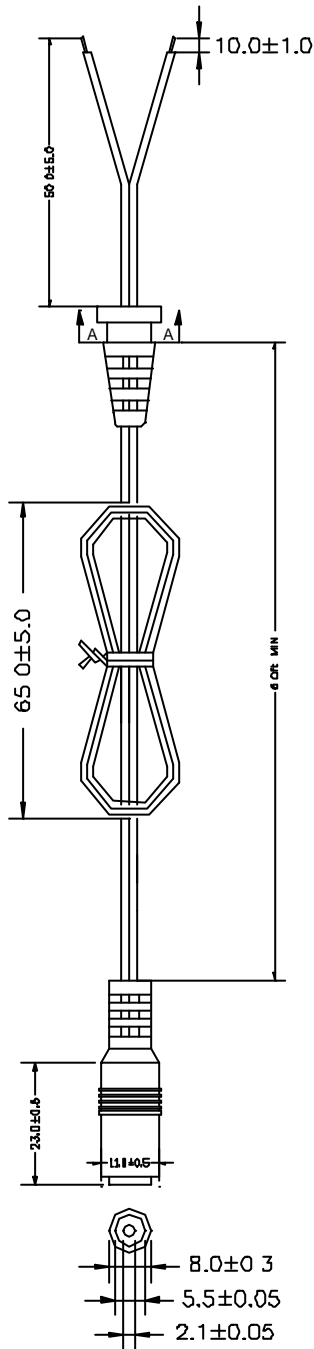
NOTE :

1. MATERIAL: AWG #22/2C, UL-2468
2. PIN ASSIGNMENT: BLACK/TEST —●— BLACK/WHITE LINE
3. VIBRATION TEST: LIFTING 500g, 120°, 15-20 TIMES/MIN
AT LEAST 1000 TIMES
4. PULL TEST: LIFTING 20 LBS, 60 SEC
SR TOLERANCE LESS THAN .2mm.
5. DC PLUG TERMINAL: NOT TO SHRINK OR SHAPE CHANGED



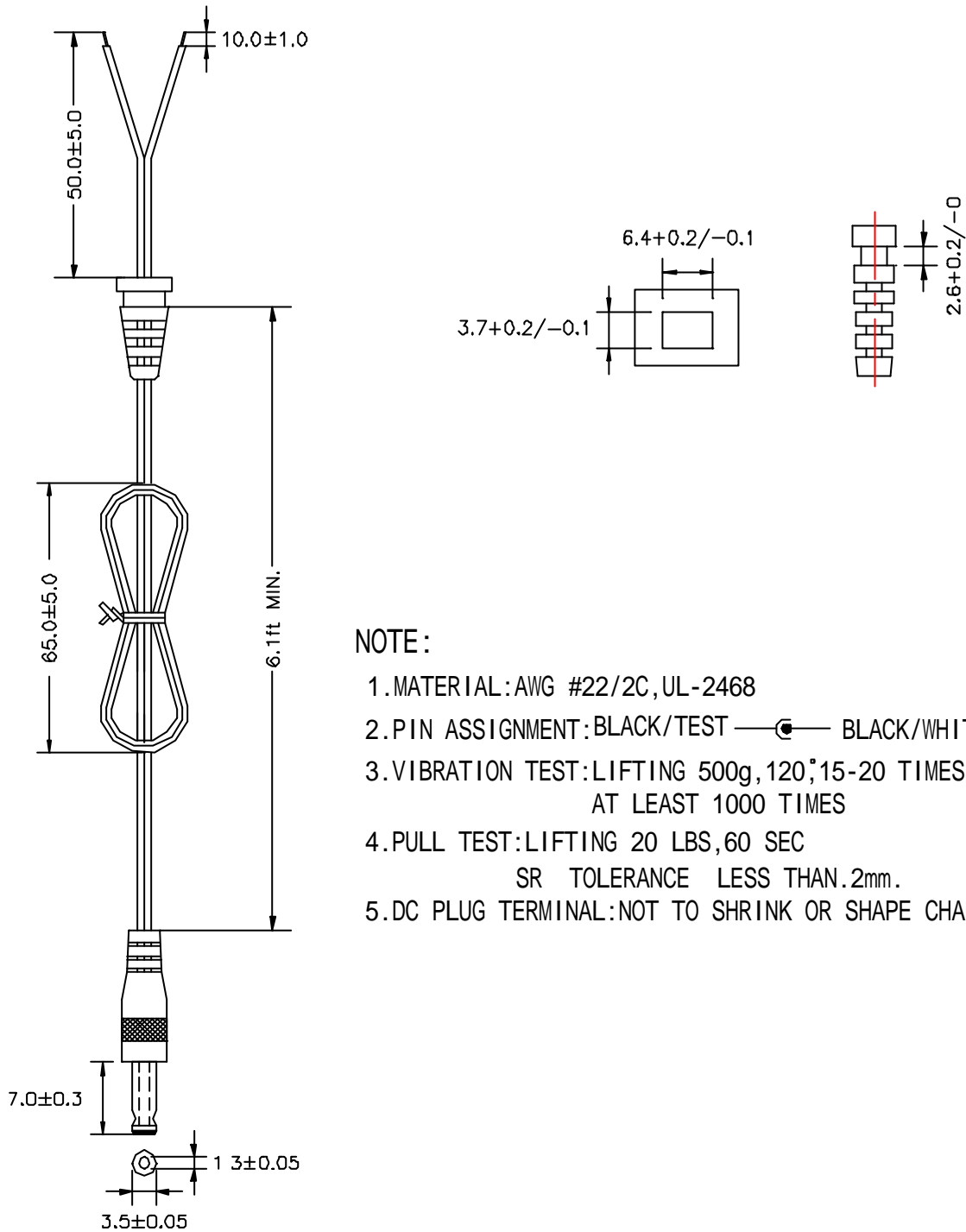
NOTE :

1. MATERIAL: AWG #22/2C, UL-2468
2. PIN ASSIGNMENT: BLACK/TEST —  BLACK/WHITE LINE
3. VIBRATION TEST: LIFTING 500g, 120°, 15-20 TIMES/MIN AT LEAST 1000 TIMES
4. PULL TEST: LIFTING 20 LBS, 60 SEC
SR TOLERANCE LESS THAN .2mm.
5. DC PLUG TERMINAL: NOT TO SHRINK OR SHAPE CHANGED
6. DC CORD MUST BE ADD A EMC RING CORE WITH 1.5 TURNS AND CROSS OVER CENTER OF RING CORE




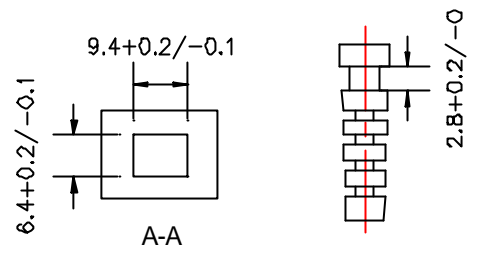
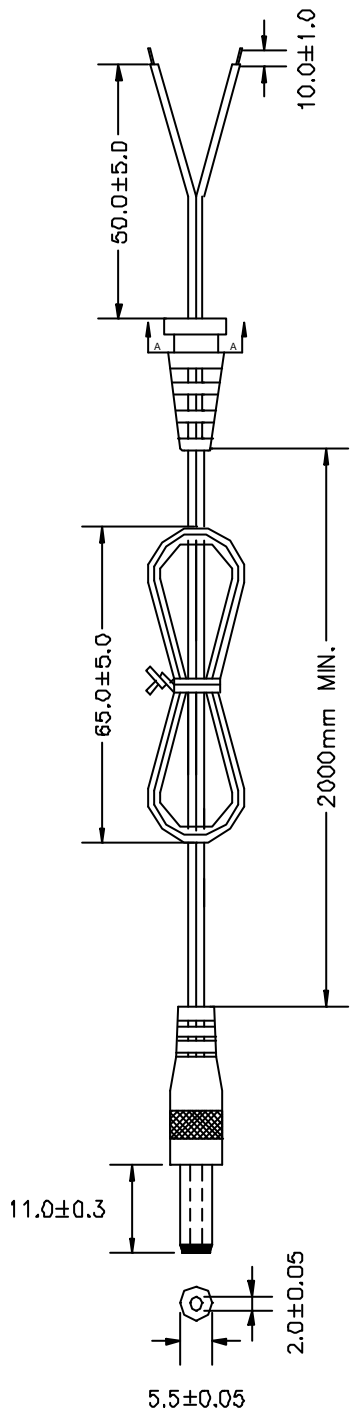
NOTE :

1. MATERIAL : AWG #22/2C, UL-2468
2. PIN ASSIGNMENT : BLACK/TEST —●— BLACK/WHITE LINE
3. VIBRATION TEST : LIFTING 500g, 120°, 15-20 TIMES/MIN AT LEAST 1000 TIMES
4. PULL TEST : LIFTING 20 LBS, 60 SEC
SR TOLERANCE LESS THAN .2mm.
5. DC PLUG TERMINAL : NOT TO SHRINK OR SHAPE CHANGED




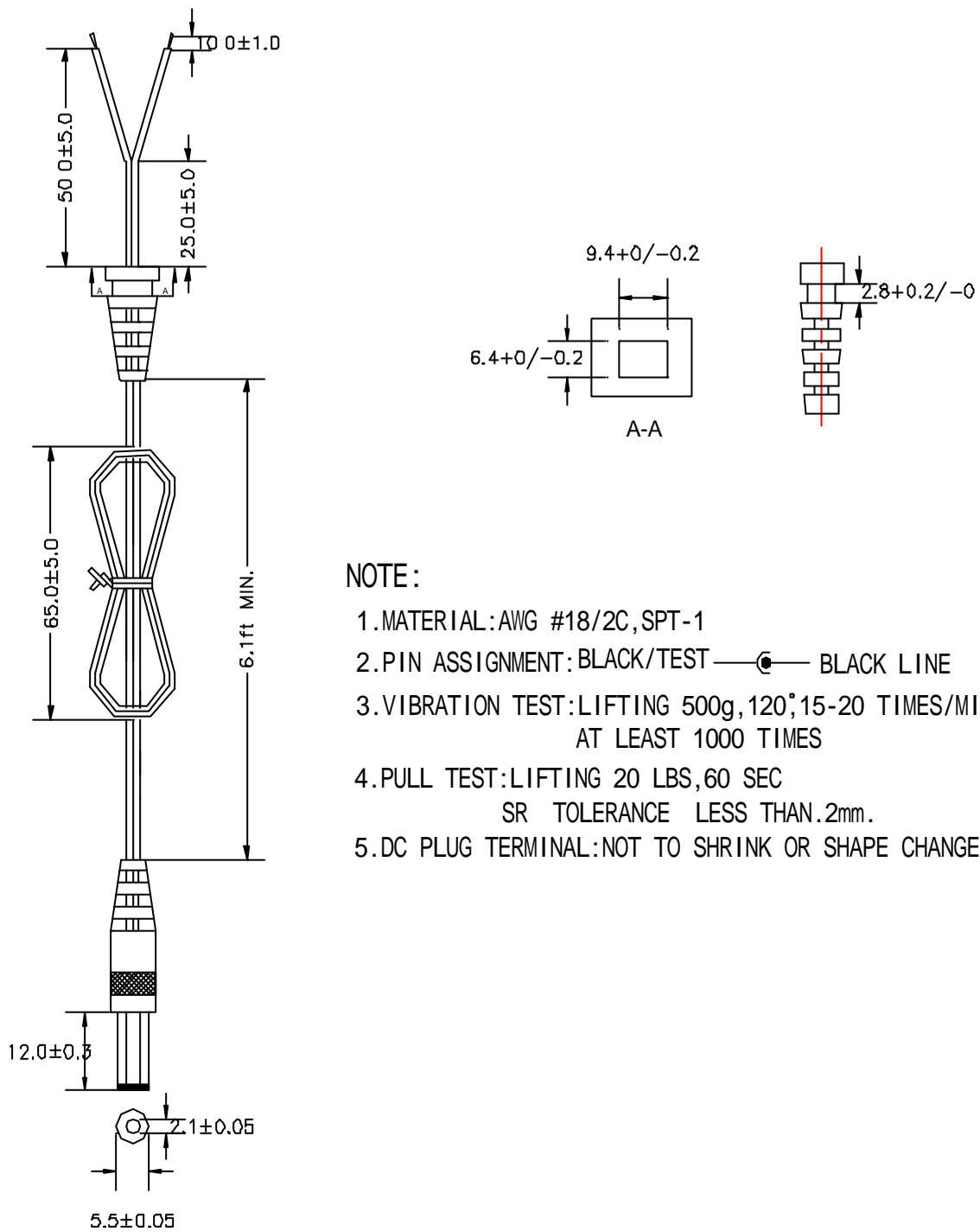
NOTE :

1. MATERIAL: AWG #22/2C, UL-2468
2. PIN ASSIGNMENT: BLACK/TEST —  BLACK/WHITE LINE
3. VIBRATION TEST: LIFTING 500g, 120°, 15-20 TIMES/MIN AT LEAST 1000 TIMES
4. PULL TEST: LIFTING 20 LBS, 60 SEC
SR TOLERANCE LESS THAN .2mm.
5. DC PLUG TERMINAL: NOT TO SHRINK OR SHAPE CHANGED



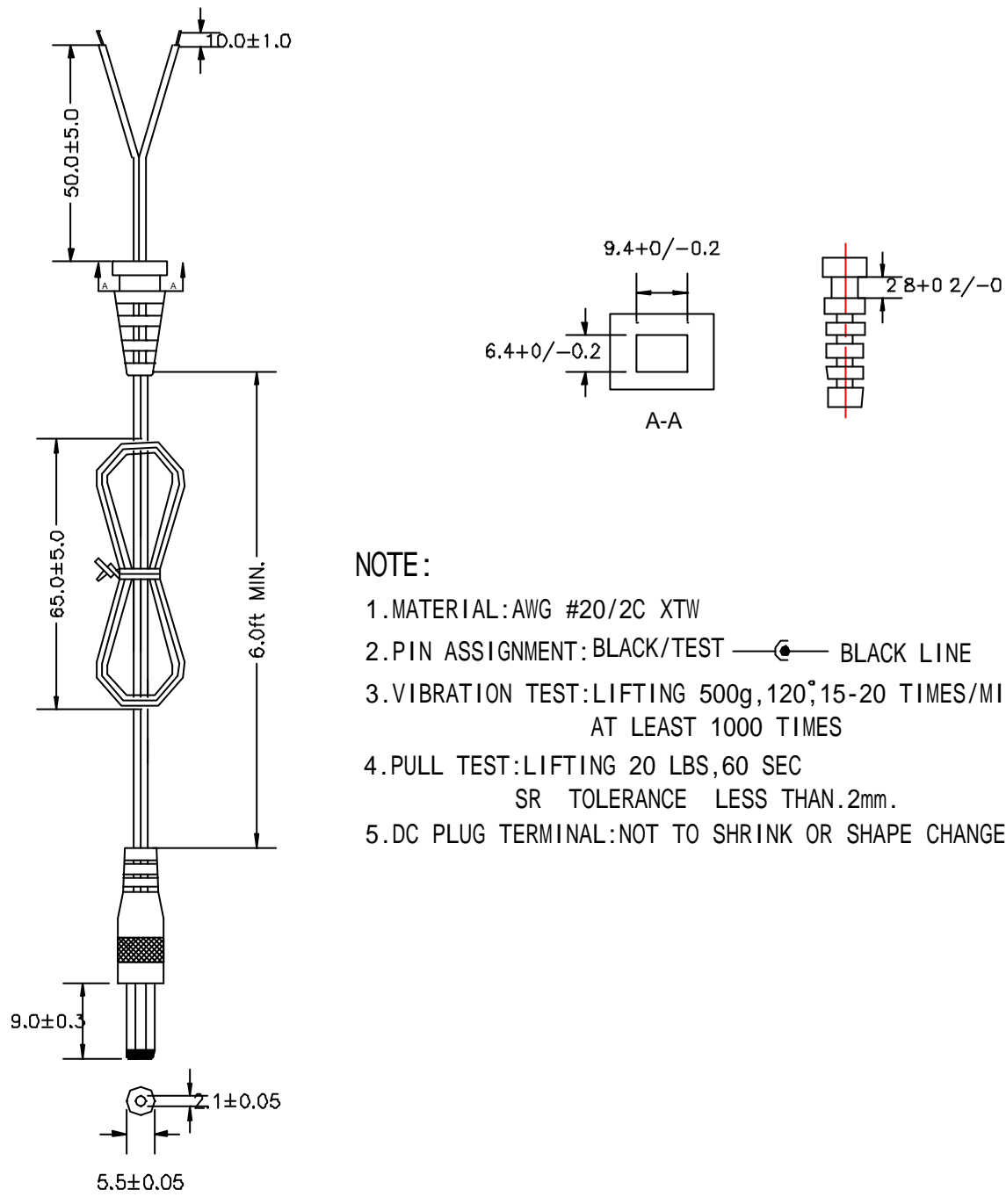
NOTE :

1. MATERIAL : AWG #22/2C , UL-2468
2. PIN ASSIGNMENT : BLACK/TEST —  — BLACK/WHITE LINE
3. VIBRATION TEST : LIFTING 500g , 120° , 15-20 TIMES/MIN AT LEAST 1000 TIMES
4. PULL TEST : LIFTING 20 LBS , 60 SEC
SR TOLERANCE LESS THAN .2mm.
5. DC PLUG TERMINAL : NOT TO SHRINK OR SHAPE CHANGED



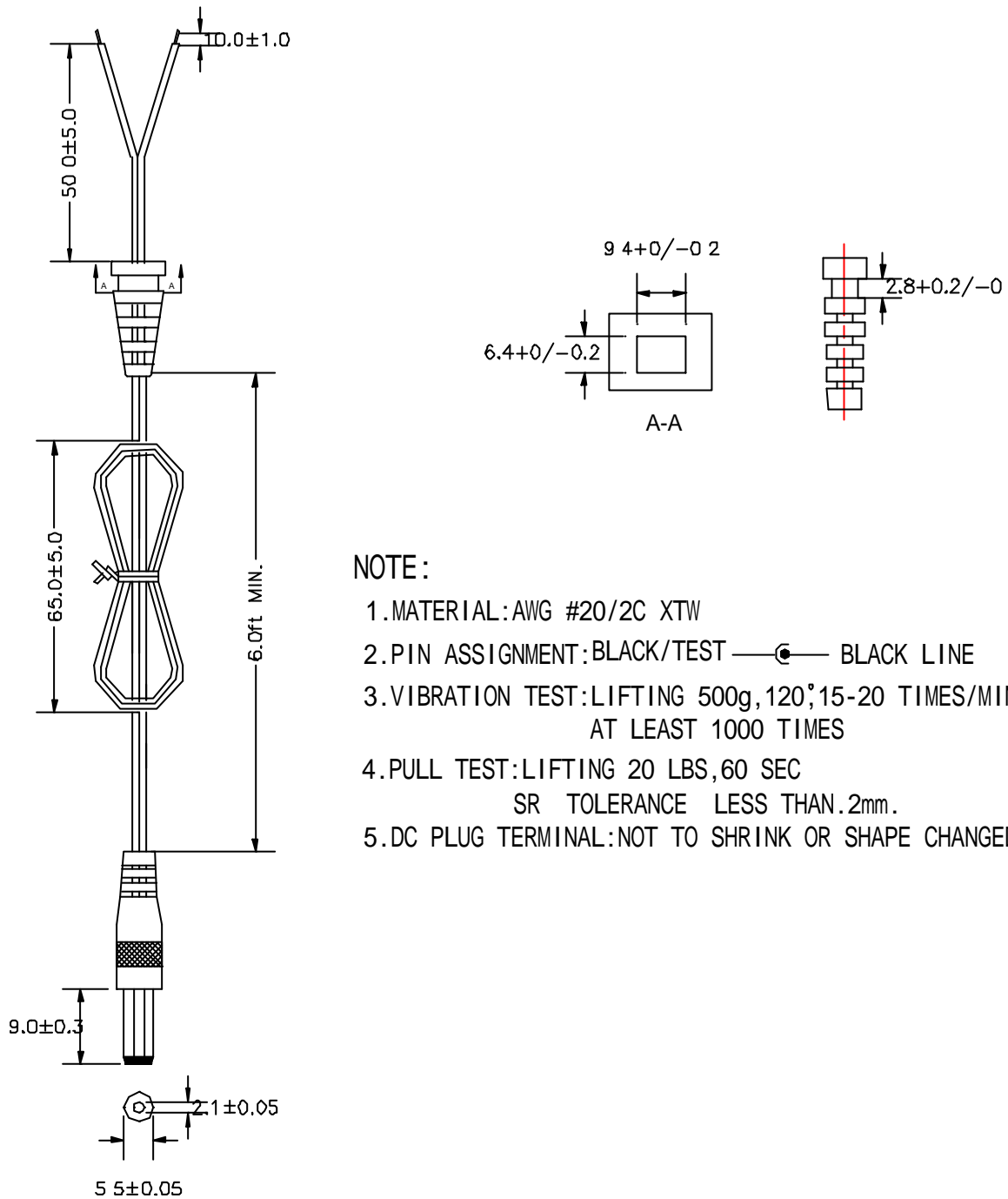
NOTE:

1. MATERIAL: AWG #18/2C, SPT-1
2. PIN ASSIGNMENT: BLACK/TEST —●— BLACK LINE
3. VIBRATION TEST: LIFTING 500g, 120°, 15-20 TIMES/MIN AT LEAST 1000 TIMES
4. PULL TEST: LIFTING 20 LBS, 60 SEC
SR TOLERANCE LESS THAN .2mm.
5. DC PLUG TERMINAL: NOT TO SHRINK OR SHAPE CHANGED



NOTE:

1. MATERIAL: AWG #20/2C XTW
2. PIN ASSIGNMENT: BLACK/TEST —●— BLACK LINE
3. VIBRATION TEST: LIFTING 500g, 120°, 15-20 TIMES/MIN AT LEAST 1000 TIMES
4. PULL TEST: LIFTING 20 LBS, 60 SEC
SR TOLERANCE LESS THAN .2mm.
5. DC PLUG TERMINAL: NOT TO SHRINK OR SHAPE CHANGED



NOTE:

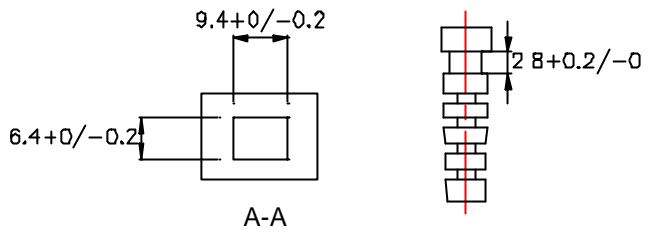
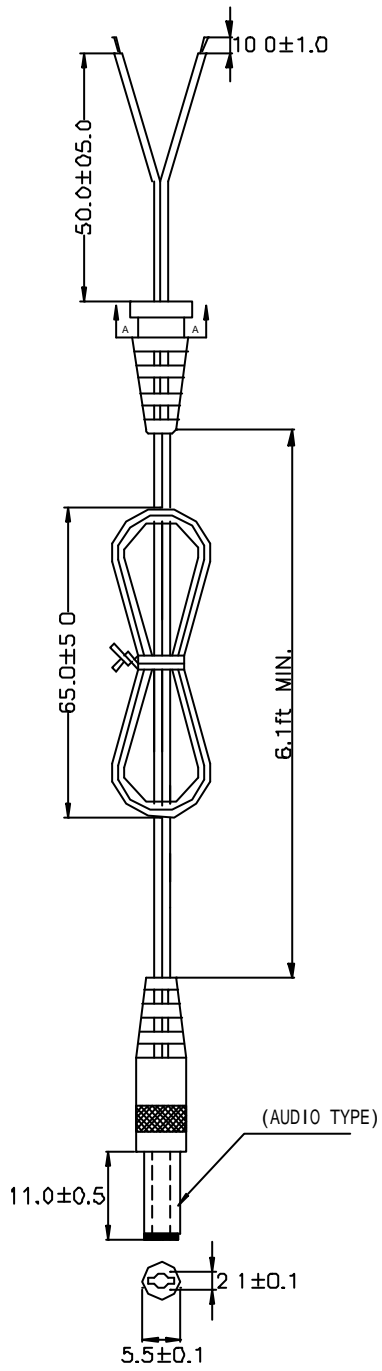
1. MATERIAL: AWG #20/2C XTW
2. PIN ASSIGNMENT: BLACK/TEST —●— BLACK LINE
3. VIBRATION TEST: LIFTING 500g, 120°, 15-20 TIMES/MIN AT LEAST 1000 TIMES
4. PULL TEST: LIFTING 20 LBS, 60 SEC
SR TOLERANCE LESS THAN .2mm.
5. DC PLUG TERMINAL: NOT TO SHRINK OR SHAPE CHANGED

SL Spec Lin Enterprise Co., Ltd.

EI-48-4

2F, No. 6, Alley 17, Lane 42, Chung Hsing N. St., San Chung City, Taipei Hsien, Taiwan, R.O.C

TEL : 886-2-2999-1395 FAX : 886-2-2278-1629 Email : speclin@ms22.hinet.net



NOTE :

1. MATERIAL: AWG #22/2C, UL-2468
2. PIN ASSIGNMENT: BLACK/TEST —●— BLACK/WHITE LINE
3. VIBRATION TEST: LIFTING 500g, 120°, 15-20 TIMES/MIN AT LEAST 1000 TIMES
4. PULL TEST: LIFTING 20 LBS, 60 SEC
SR TOLERANCE LESS THAN .2mm.
5. DC PLUG TERMINAL: NOT TO SHRINK OR SHAPE CHANGED

SL Spec Lin Enterprise Co., Ltd.

EI-48-5

2F, No. 6, Alley 17, Lane 42, Chung Hsing N. St., San Chung City, Taipei Hsien, Taiwan, R.O.C

TEL : 886-2-2999-1395 FAX : 886-2-2278-1629 Email : speclin@ms22.hinet.net