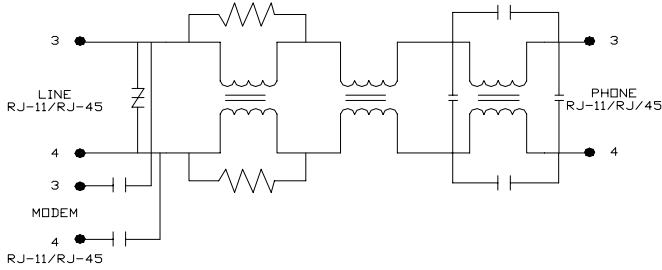


ADSL POTS SPLITTER

- Designs reference standard for ITU-T G.992.1 Annex.E
- POTS loop DC currents from 0mA to 100mA
- Operation temperature -10 to 75°C



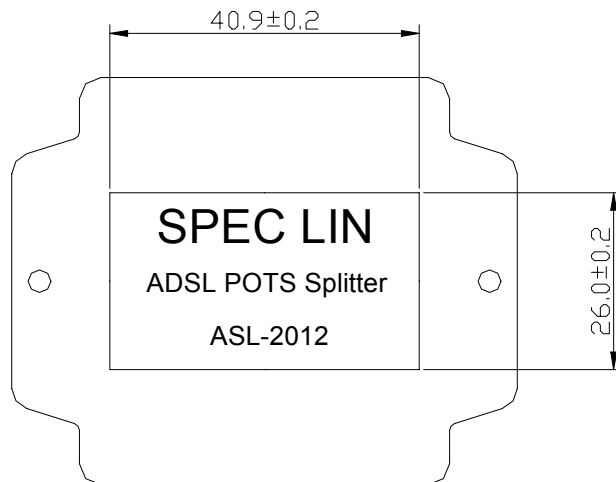
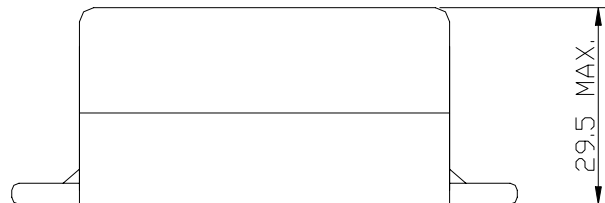
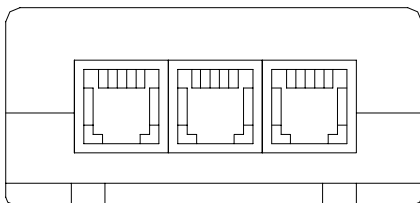
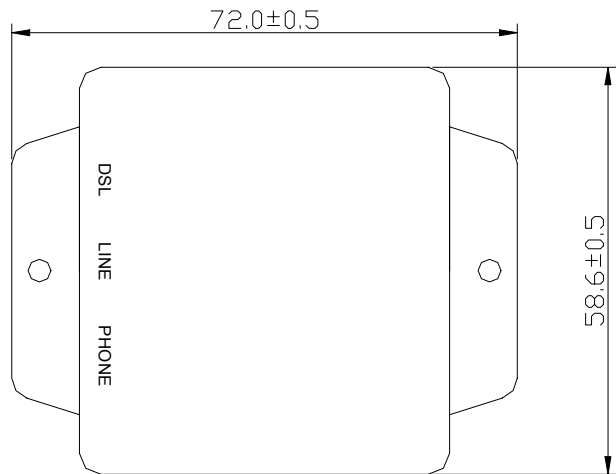
Electrical requirements

	Range / Values	MIN.	TYP.	MAX.	Unit
Ringing frequency	15.3Hz to 68Hz				
ADSL band	30KHz to 1104KHz				
DC Voltage	0V to 105V				
Nominal signal	21mVpp to 5.1Vpp				
Ringing signal	40Vrms to 150Vrms				
LINE Impedance	(230nF//1050Ω)+320Ω				
PHONE Impedance	(230nF//1050Ω)+320Ω				
MODEM Impedance	30K – 1.1MHz/100Ω				
Isolation:					
Tip or Ring to GND	term= ∞ Ω ; 100VDC	10			MΩ
Tip to Ring	term= ∞ ; 100VDC	1			MΩ
DC Resistance	term= 0Ω EACH LINE			25	Ω
Insertion Loss	1004Hz	-1.0		+1.0	dB
Attenuation Distortion (relative to 1004Hz)	200Hz – 4000Hz	-1.0		+1.0	dB
Return Loss					
	300Hz - 500Hz	≥ 14			dB
	500Hz – 2KHz	≥ 18			dB
	2KHz – 3.4KHz	≥ 14			dB
Attenuation in ADSL band	30KHz – 1.1MHz	≥ 45			dB
DC Current				100	mA

SPEC LIN ENTERPRISE CO.LTD.
AGENCY NO. ISO 9002 : 036809750

UNITS: mm
 SHEET: 1 OF 5

DRAWING NO.
ASL-2012



SPEC LIN ENTERPRISE CO. LTD.

BLOCK2,LIU WU FIRST INDUSTRIAL AREA,ERHEN RO. WE.,
SHIH-JE TOWN,DONG GUAN CITY,KUAN DONG PROVINCE,CHINA
TEL: 86-769-632-1088 FAX: 86-769-632-1061

AGENCY NO.

ISO 9002 : 036809750

DRAWING NO.

ASL-2012

UNITS
mm

SHEET
2 OF 5

