

International Epoxy Encapsulated Transformer

SPECIFICATIONS : **14.4 Kbps**

ELECTRICAL :

IMPEDANCE : PRI. & SEC.= 600 OHMS EACH (REF.)

DESIGNED TO REFLECT : 600 OHMS \pm 3% ON PRI. WITH
470 OHMS LOAD ON SEC. @ 1KHz, 1Vrms

D.C. RESISTANCE : PRI. = 66 OHMS \pm 10% @ 20°C
SEC. = 66 OHMS \pm 10%

TURN RATIO : (PRI. : SEC.) = 1 : 1 \pm 1%

D.C. CURRENT : NONE

INDUCTANCE : 4 H MIN. (TYP. 8H) @ 200Hz, 1Vrms ON PARALLEL

LEAKAGE INDUCTANCE : 18.5 mH MAX. @ 1KHz, 1Vrms

INSERTION LOSS : 1.5 dB MAX. @ 1KHz

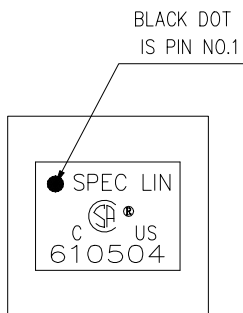
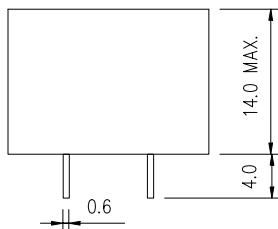
FREQUENCY RESPONSE : \pm 0.4 dB @ 200Hz - 4KHz

RETURN LOSS : 16 dB MIN. @ 300Hz - 4KHz

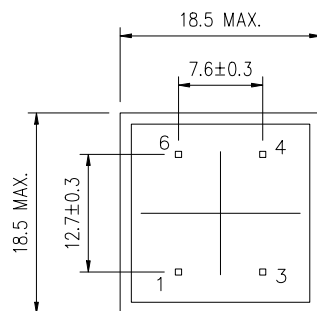
TOTAL HARMONIC DISTORTION : -68 dB MAX. @ 600Hz, -10dBm

LONGITUDINAL BALANCE : 60 dB MIN. , 200Hz - 1KHz
40 dB MIN. , 1KHz - 4KHz

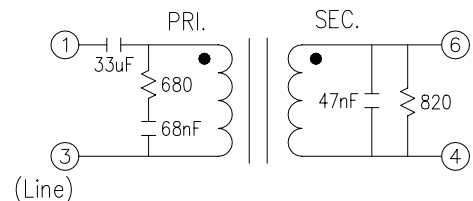
HI-POT TEST : 3.75 KVAC MIN. BETWEEN PRI. & SEC. 1mA FOR 1 MINUTE



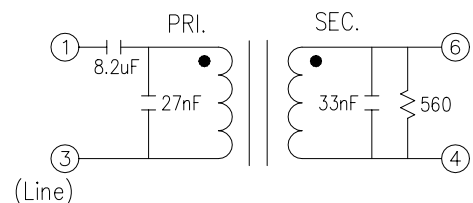
TOP VIEW



BOTTOM VIEW



OPTIMUM CLASS (A) COMPLEX MATCH



OPTIMUM CLASS (B) 600 OHMS MATCH

SPEC LIN ENTERPRISE CO. LTD.

2F, No.6, ALLEY 17, LANE 42, CHUNG HSING N. ST.
SAN CHUNG CITY, TAIPEI, TAIWAN
TEL: 886-2-29991394 FAX: 886-2-22781629

AGENCY NO.

UL NO. : E181559

CSA NO. : LR107869

ISO 9002: 036809750

DRAWING NO.

610504

UNITS
mm

SHEET
1 OF 1

