

International Epoxy Encapsulated Transformer

SPECIFICATIONS : **33.6~56 Kbps**

ELECTRICAL :

IMPEDANCE : PRI. & SEC.= 600 OHMS EACH (REF.)

DESIGNED TO REFLECT : 600 OHMS \pm 3% ON PRI. WITH
470 OHMS LOAD ON SEC. @ 1KHz, 1Vrms

D.C. RESISTANCE : PRI. = 66 OHMS \pm 10% @ 20°C

SEC. = 66 OHMS \pm 10%

TURN RATIO : (PRI. : SEC.) = 1 : 1 \pm 1%

D.C. CURRENT : NONE

INDUCTANCE : 10 H MIN. (TYP. 13H) @ 200Hz, 1Vrms ON PARALLEL

INSERTION LOSS : 1.5 dB MAX. @ 1KHz

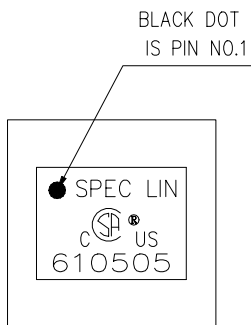
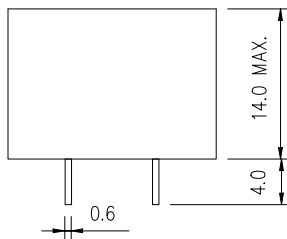
FREQUENCY RESPONSE : \pm 0.4 dB @ 200Hz - 4KHz

RETURN LOSS : 21 dB MIN. @ 300Hz - 4KHz

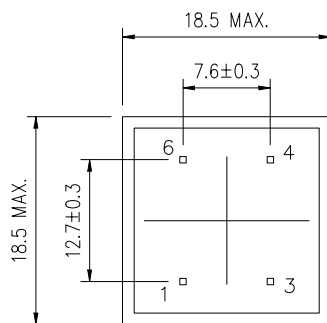
TOTAL HARMONIC DISTORTION : -83 dB MAX. @ 600Hz, -10dBm

LONGITUDINAL BALANCE : 80 dB MIN. @ 200Hz - 4KHz

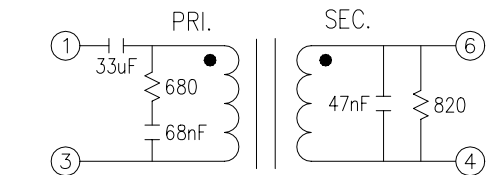
HI-POT TEST : 3.75 KVAC MIN. BETWEEN PRI. & SEC. 1mA FOR 1 MINUTE



TOP VIEW

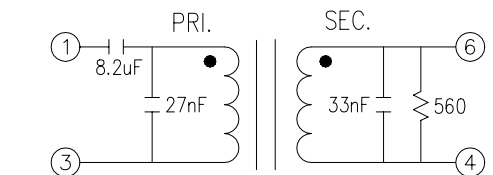


BOTTOM VIEW



(Line)

OPTIMUM CLASS (A) COMPLEX MATCH



(Line)

OPTIMUM CLASS (B) 600 OHMS MATCH

SPEC LIN ENTERPRISE CO. LTD.

2F, No. 6, ALLEY 17, LANE 42, CHUNG HSING N.S.T.
SAN CHUNG CITY, TAIPEI, TAIWAN

TEL: 886-2-29991394 FAX: 886-2-22781629

AGENCY NO.

UL NO. : E181559

CSA NO. : LR107869

ISO 9002 : 036809750

DRAWING NO.

610505

UNITS

mm

SHEET

1 OF 1

