

International Epoxy Encapsulated Transformer

SPECIFICATIONS : **14.4 Kbps**

ELECTRICAL :

IMPEDANCE : PRI. & SEC.= 600 OHMS EACH (REF.)

DESIGNED TO REFLECT : 600 OHMS \pm 3% ON PRI. WITH
480 OHMS LOAD ON SEC. @ 1KHz, 1Vrms

D.C. RESISTANCE : PRI. = 66 OHMS \pm 10% @ 20°C

SEC. = 66 OHMS \pm 10%

TURN RATIO : (PRI. : SEC.) = 1 : 1 \pm 1%

D.C. CURRENT : NONE

INDUCTANCE : 1 H MIN. (TYP. 8H) @ 1KHz, 1Vrms ON SERIES.

INSERTION LOSS : 1.5 dB MAX. @ 1KHz

FREQUENCY RESPONSE : \pm 0.4 dB @ 200Hz - 4KHz

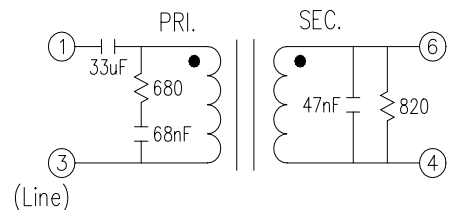
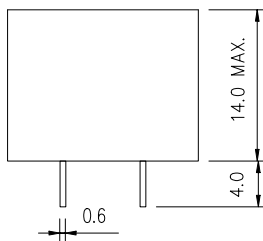
RETURN LOSS : 18 dB MIN. @ 1KHz

TOTAL HARMONIC DISTORTION : -70 dB MAX. @ 600Hz, -10dBm

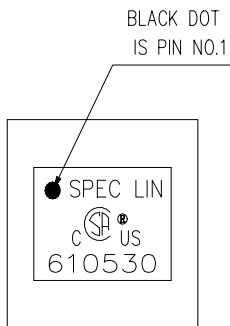
LONGITUDINAL BALANCE : 60 dB MIN. , 200Hz - 1KHz

40 dB MIN. , 1KHz - 4KHz

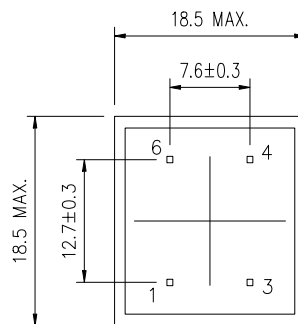
HI-POT TEST : 3.75 KVAC MIN. BETWEEN PRI. & SEC. 1mA FOR 1 MINUTE



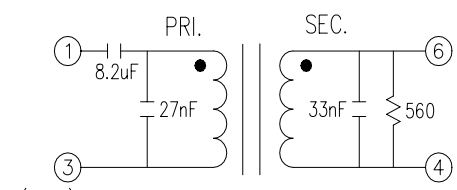
(Line) OPTIMUM CLASS (A) COMPLEX MATCH



TOP VIEW



BOTTOM VIEW



(Line) OPTIMUM CLASS (B) 600 OHMS MATCH

SPEC LIN ENTERPRISE CO. LTD.

2F, No. 6, ALLEY 17, LANE 42, CHUNG HSING N. ST.
SAN CHUNG CITY, TAIPEI, TAIWAN
TEL: 886-2-29991394 FAX: 886-2-22781629

AGENCY NO.

UL NO. : E181559

CSA NO. : LR107869

ISO 9002: 036809750

DRAWING NO.

610530

UNITS
mm

SHEET
1 OF 1

