

# Surface Mounting & Pcmcia Transformer

SPECIFICATIONS : **56 Kbps**

ELECTRICAL :

IMPEDANCE : PRI. & SEC.= 600 OHMS EACH (REF.)

DESIGNED TO REFLECT : 600 OHMS  $\pm$  3% ON PRI. WITH  
287 OHMS LOAD ON SEC. @ 1KHz, 1Vrms

D.C. RESISTANCE : PRI. = 155 OHMS  $\pm$  10% @ 20°C  
SEC. = 145 OHMS  $\pm$  10%

TURN RATIO : (PRI. : SEC.) = 1 : 1  $\pm$  2%

D.C. CURRENT : NONE

INDUCTANCE : 1.5 H MIN. (TYP. 4.5H) @ 1KHz, 1Vrms ON PARALLEL

INSERTION LOSS : 3.5 dB MAX. @ 1KHz, 1Vrms

FREQUENCY RESPONSE :  $\pm$ 0.1 dB @ 200Hz - 4KHz

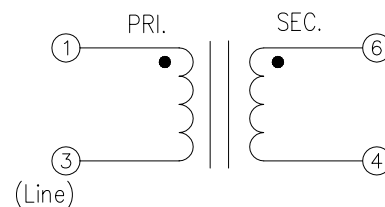
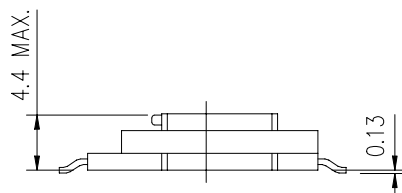
RETURN LOSS : 14 dB MIN. @ 200Hz - 4KHz

TOTAL HARMONIC DISTORTION : -82 dB MAX. @ 600Hz, -10dBm

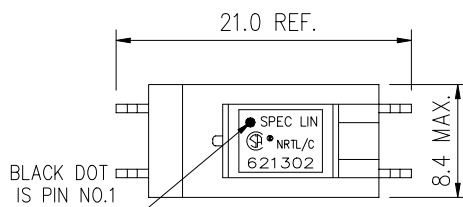
	150 Hz	200Hz	300Hz	600Hz	1 KHz	4 KHz
-10 dBm	-68.2	-73.6	-80.1	-86.9	-89.2	-89.9

LONGITUDINAL BALANCE : 60 dB MIN. , 200Hz - 1KHz  
40 dB MIN. , 1KHz - 4KHz

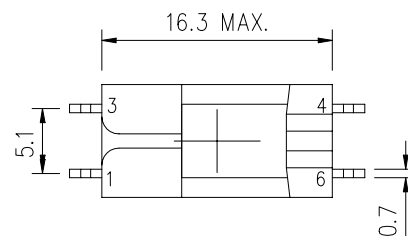
HI-POT TEST : 1.65 KVAC MIN. BETWEEN PRI. & SEC. 1mA FOR 2 SECONDS



SCHEMATIC



TOP VIEW



BOTTOM VIEW

**SPEC LIN ENTERPRISE CO. LTD.**

2F, No.6, ALLEY 17, LANE 42, CHUNG HSING N.ST.  
SAN CHUNG CITY, TAIPEI, TAIWAN  
TEL: 886-2-29991394 FAX: 886-2-22781629

AGENCY NO.

UL NO. : E181559

CSA NO. : LR107869

ISO 9002: 036809750

DRAWING NO.

**621302**

UNITS  
mm

SHEET  
1 OF 1

