

Transformer

SPECIFICATIONS : **56 Kbps**

ELECTRICAL :

IMPEDANCE : PRI. & SEC.= 600 OHMS EACH (REF.)

DESIGNED TO REFLECT : 600 OHMS \pm 3% ON PRI. WITH

301 OHMS LOAD ON SEC. @ 1KHz, 1Vrms

D.C. RESISTANCE : PRI. = 150 OHMS \pm 10% @ 20°C

SEC. = 150 OHMS \pm 10%

TURN RATIO : (PRI. : SEC.) = 1 : 1 \pm 2%

D.C. CURRENT : NONE

INDUCTANCE : 10 H MIN. (TYP. 14H) @ 200Hz, 1Vrms ON PARALLEL

INSERTION LOSS : 3.5 dB MAX. @ 1KHz, 1Vrms

FREQUENCY RESPONSE : \pm 0.25 dB @ 200Hz - 4KHz

RETURN LOSS : 30 dB MIN. , 300Hz

16 dB MIN. , 3KHz

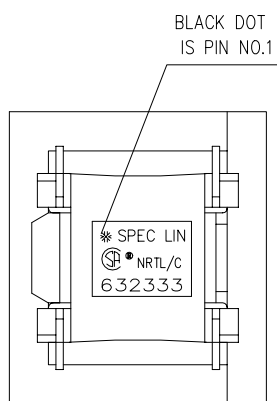
TOTAL HARMONIC DISTORTION : -85 dB MAX. @ 500Hz, -10dBm

LINE TO RECEIVE : -85 dB MAX. (-90dB typ) , 500Hz - 10dBm input (V.90)

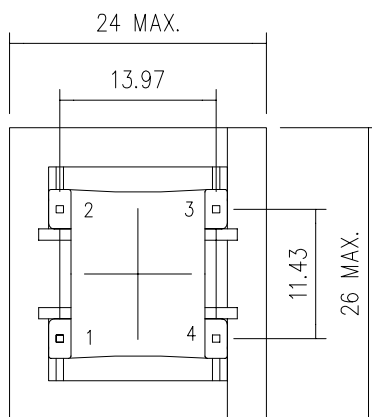
TRANSMIT TO LINE : -75 dB MAX. (-79dB typ) , 160Hz - -3dB output

HI-POT TEST : 1.50 KVAC MIN. BETWEEN PRI. & SEC. 1mA FOR 2 SECONDS

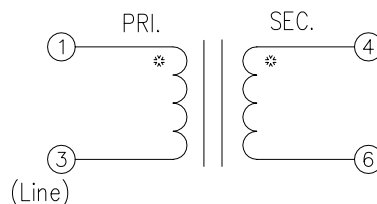
UL1950/CSA950



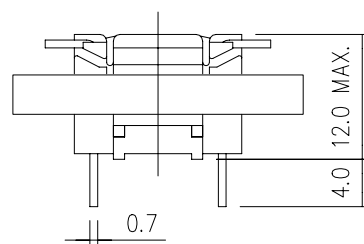
TOP VIEW



BOTTOM VIEW



SCHEMATIC



SPEC LIN ENTERPRISE CO. LTD.

2F, No.6, ALLEY 17, LANE 42, CHUNG HSING N.ST.
SAN CHUNG CITY, TAIPEI, TAIWAN

TEL: 886-2-29991394 FAX: 886-2-22781629

AGENCY NO.

UL NO. : E181559

CSA NO. : LR107869

ISO 9002: 036809750

DRAWING NO.

632333

UNITS
mm

SHEET
1 OF 1

