

# International Epoxy Encapsulated Transformer

SPECIFICATIONS : **56 Kbps**

ELECTRICAL :

IMPEDANCE : PRI. & SEC.= 600 OHMS EACH (REF.)

DESIGNED TO REFLECT : 600 OHMS  $\pm$  5% ON PRI. WITH  
374 OHMS LOAD ON SEC. @ 1KHz, 1Vrms

D.C. RESISTANCE : PRI. = 104 OHMS  $\pm$  10% @ 20°C  
SEC. = 120 OHMS  $\pm$  10%

TURN RATIO : (PRI. : SEC.) = 1 : 1  $\pm$  1%

D.C. CURRENT : NONE

INDUCTANCE : 30 H MIN. (TYP. 42H) @ 200Hz, 1Vrms ON PARALLEL

INSERTION LOSS : 2.0 dB MAX. @ 1KHz

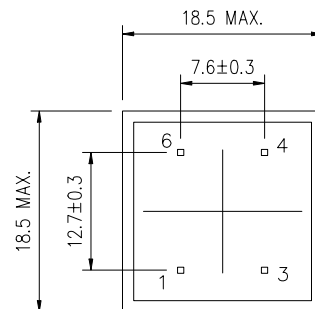
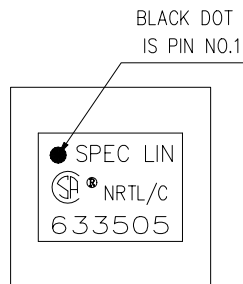
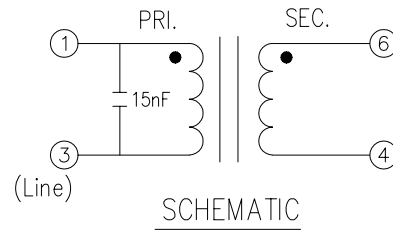
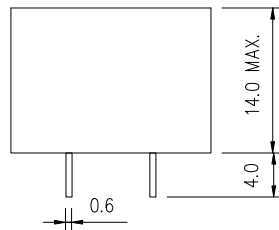
FREQUENCY RESPONSE :  $\pm$ 0.2 dB @ 200Hz - 4KHz

RETURN LOSS : 25 dB MIN. @ 200Hz - 4KHz

TOTAL HARMONIC DISTORTION : -82 dB MAX. , 150Hz, -3dBm  
-85 dB MAX. , 300Hz  
-90 dB MAX. , 600Hz

LONGITUDINAL BALANCE : 80 dB MIN. @ 200Hz - 4KHz

HI-POT TEST : 3.75 KVAC MIN. BETWEEN PRI. & SEC. 1mA FOR 1 MINUTE



TOP VIEW

BOTTOM VIEW

**SPEC LIN** ENTERPRISE CO. LTD.

2F, No. 6, ALLEY 17, LANE 42, CHUNG HSING N. ST.  
SAN CHUNG CITY, TAIPEI, TAIWAN

TEL: 886-2-29991394 FAX: 886-2-22781629

AGENCY NO.

UL NO. : E181559

CSA NO. : LR107869

ISO 9002: 036809750

DRAWING NO.

**633505**

UNITS  
mm

SHEET  
1 OF 1

