

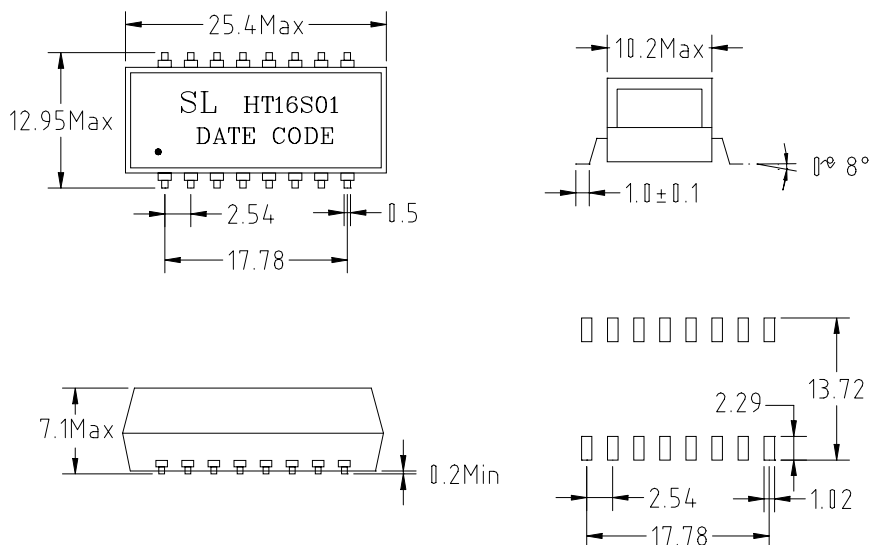


- ◆ Designed to meet IEEE802.4u requirement.
- ◆ Primary inductance 350 μ H min with 8mA DC Bias
- ◆ Designed to meet IR235°C peak requirement.

Electrical Characteristic @25°C

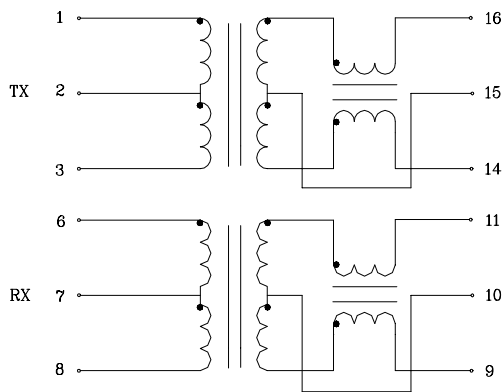
Model No.	Turn Ratio TX/RX	Insertion Loss dB Typ 0.1-100MHz	Return Loss dB 30/60/80MHz	Crosstalk dB Typ 60/100MHz	Schematic
HT16S01B	1:1.414/1:1	1.0	-16/note/-10	-40/38	S-1
HT16S02	2:1/1:1	1.0	-16/note/-10	-40/38	S-6
HT16S03A	1:1.414/1:1	1.0	-16/note/-10	-40/38	S-5
HT16S04	1.25:1/1:1	1.0	-16/note/-10	-40/38	S-1
HT16S05	1.25:1/1:1	1.0	-16/note/-10	-40/38	S-5
HT16S06	1:1.414/1:1	1.0	-16/note/-10	-40/38	S-4
HT16S07	1:1/1:1	1.0	-16/note/-10	-40/38	S-3
HT16S08	1:1/1:1	1.0	-16/note/-10	-40/38	S-2

Dimension : ± 0.25 mm

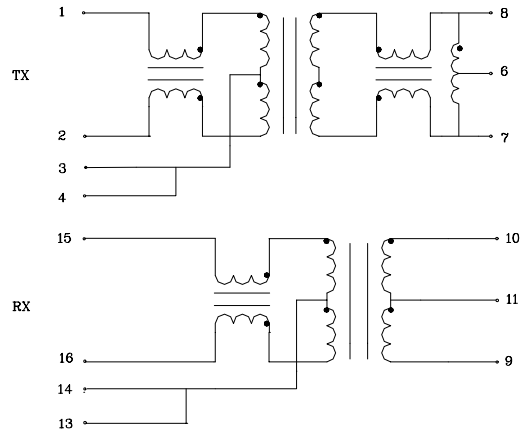


Schematic

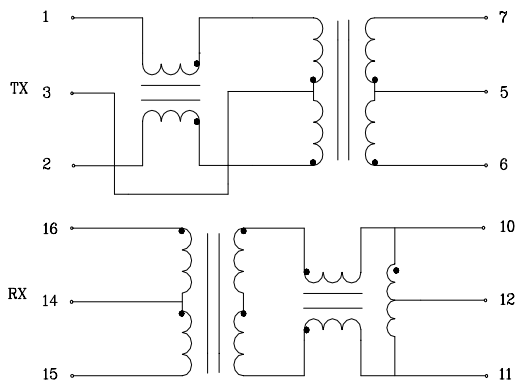
S-1



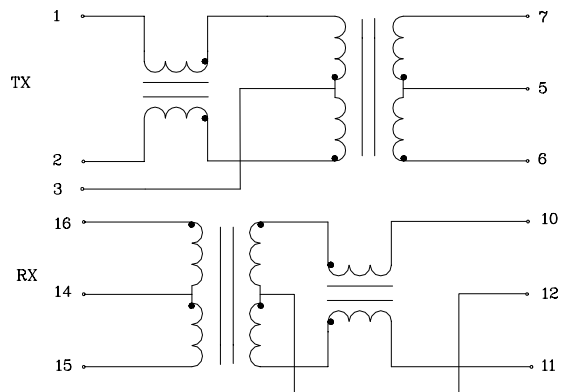
S-2



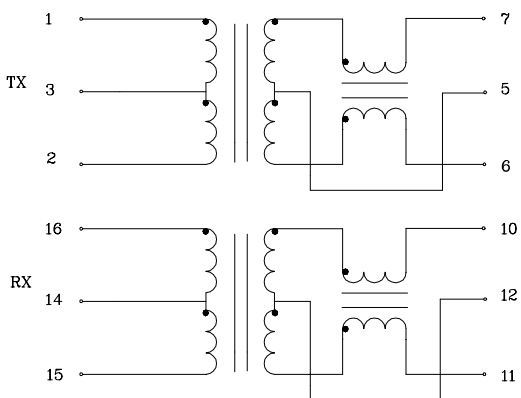
S-3



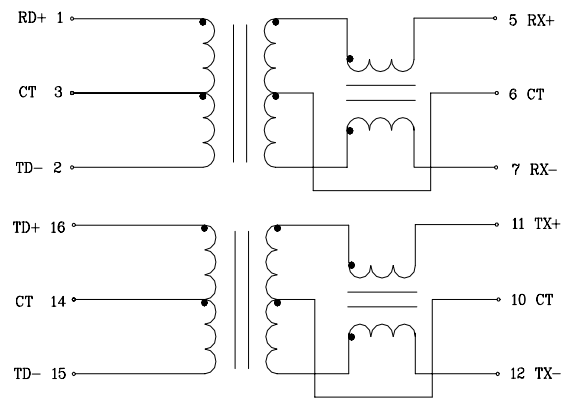
S-4



S-5



S-6



SPECLIN

Single 10/100Base-T Transformer Design for varied turn ratio on TX side

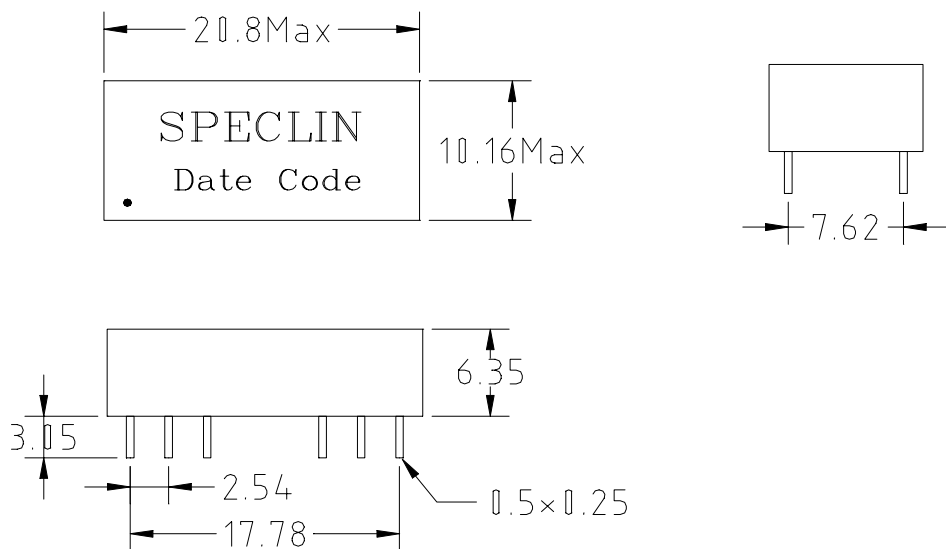


- ◆ Designed to meet IEEE802.4u requirement.
- ◆ Primary inductance 350 μ H min. with 8mA DC Bias
- ◆ PTH Type

Electrical Characteristic @25°C

Model No.	Turn Ratio TX/RX	Insertion Loss dB Typ	Return Loss dB 30/60/80MHz	Crosstalk dB Typ	Schematic
HT16P01A	1:1/1:1	1.0	-16/note/-10	-40/38	S-1
HT16P02A	1:1/1:1	1.0	-16/note/-10	-40/38	S-3
HT16P03	1:1/1:1	1.0	-16/note/-10	-40/38	S-2
HT16P04	2:1/1:1	1.0	-16/note/-10	-40/38	S-4

Dimension: ± 0.25 mm



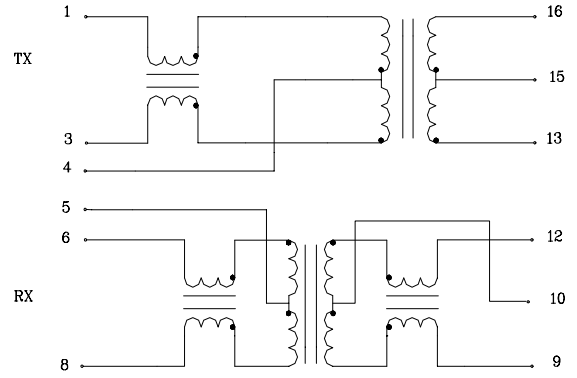
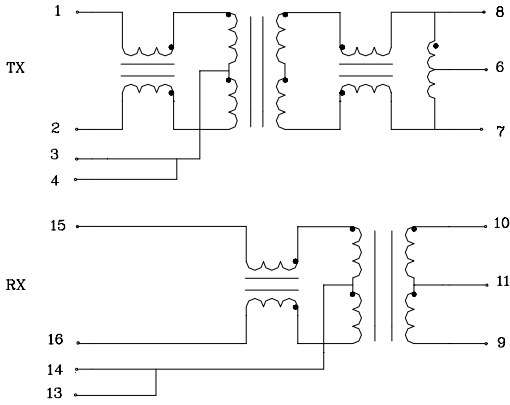
SPEC LIN

Schematic

Design for varied turn ratio on TX side
Single 10/100Base-T Transformer

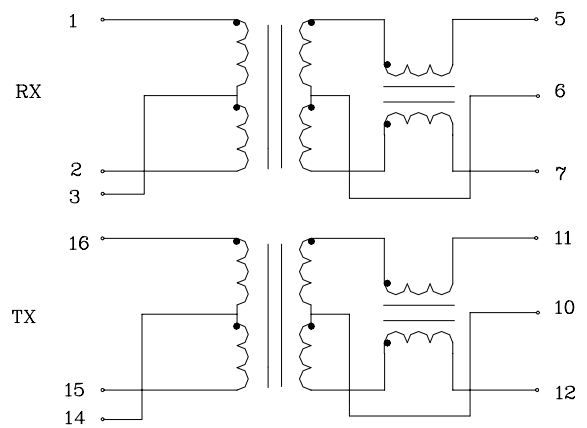
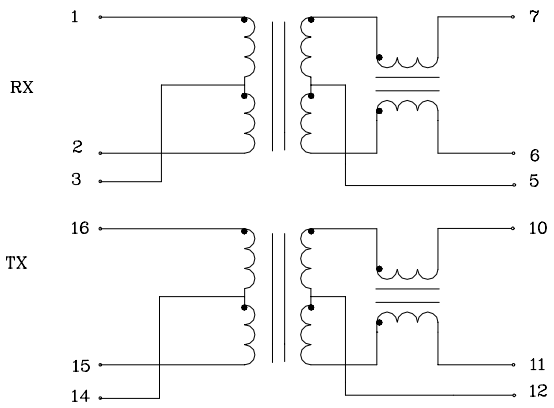
S-1

S-2



S-5

S-4



SPECLIN

**Single 10/100Base-TX Transformer
Design for 1:1 turn ratio on TX side**

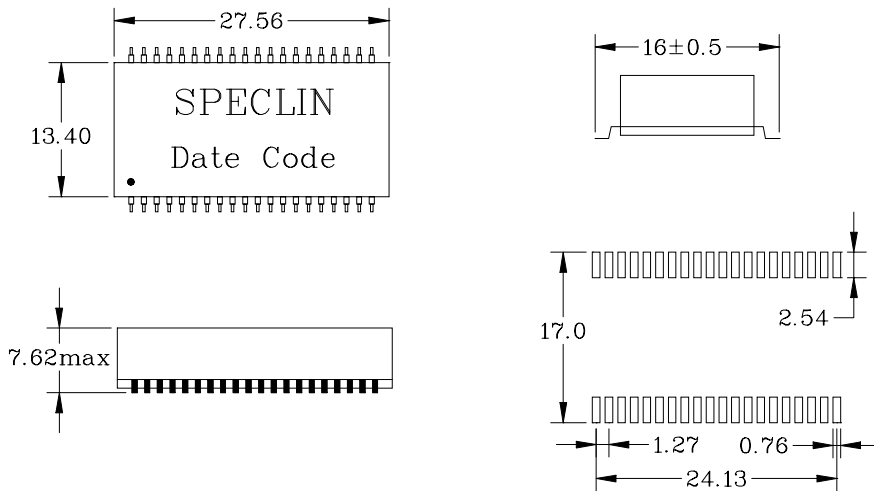


- ◆ Designed to meet IEEE802.3u requirement.
- ◆ Primary inductance 350 μ H min.with 8mA DC Bias
- ◆ Designed to meet IR235 $^{\circ}$ C peak requirement.
- ◆ 1500Vrms Isolation.

Electrical Characteristic @25 $^{\circ}$ C

Model No.	Turn Ratio TX/RX	Insertion Loss dB Typ 0.1-100MHz	Return Loss dB 30/60/80MHz	Crosstalk dB Typ	Schematic
HT40S201	1:1/1:1	1.0	-16/note/-10	-40/-38	S-1
HT40S202	1:1/1:1	1.0	-16/note/-10	-40/38	S-2
HT40S203	1:1/1:1	1.0	-16/note/-10	-40/38	S-3
HT40S204	1:1/1:1	1.0	-16/note/-10	-40/38	S-4
HT40S205	1:1/1:1	1.0	-16/note/-10	-40/38	S-5
HT40S206	1:1/1:1	1.0	-16/note/-10	-40/38	S-6

Dimension: +0.25mm

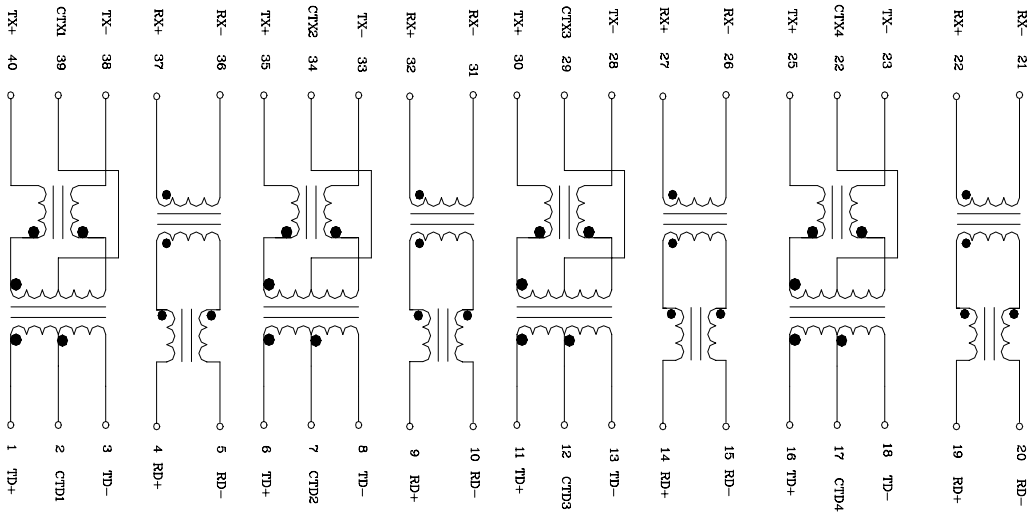


SPEC LIN

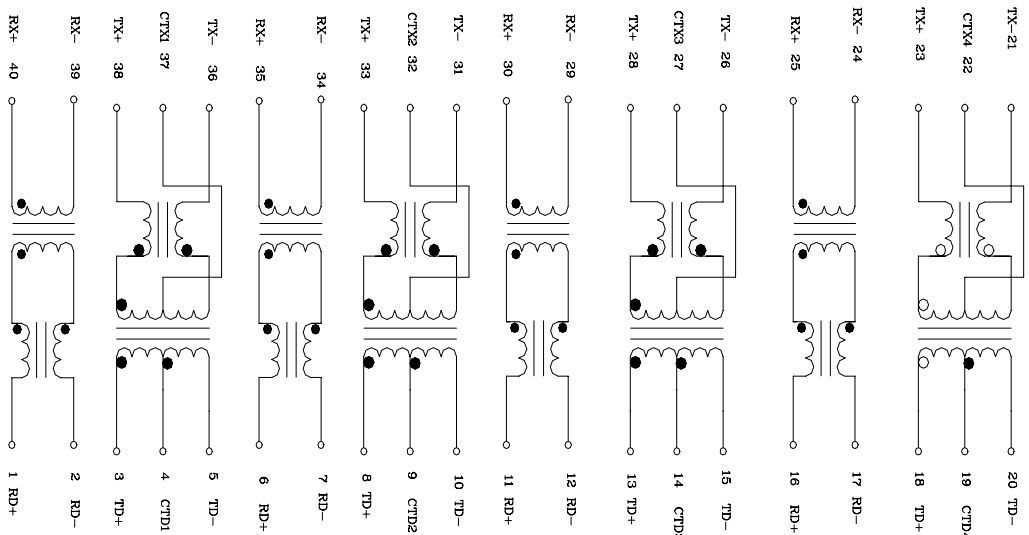
Single 10/100Base-TX Transformer Design for 1:1 turn ratio on TX side

Schematic

S-1



S-2

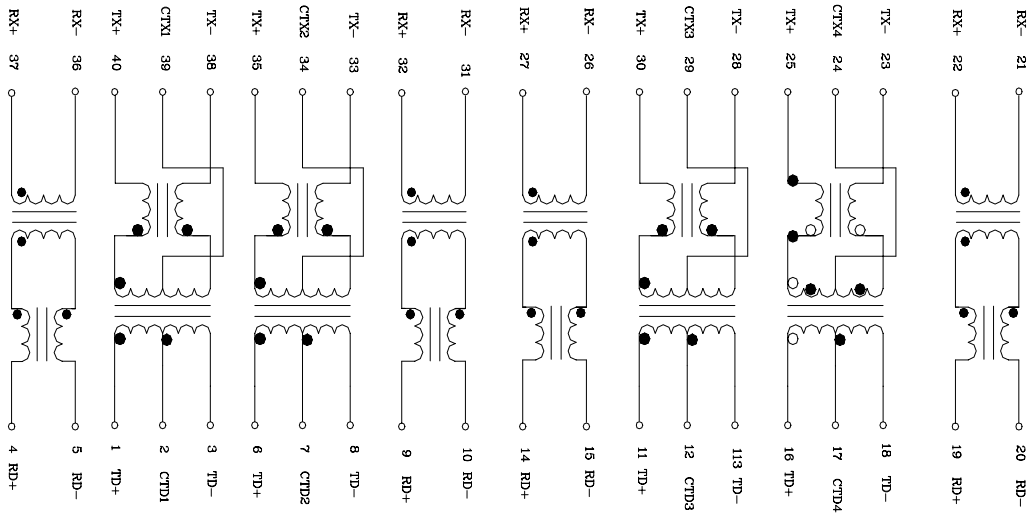


Single 10/100Base-TX Transformer

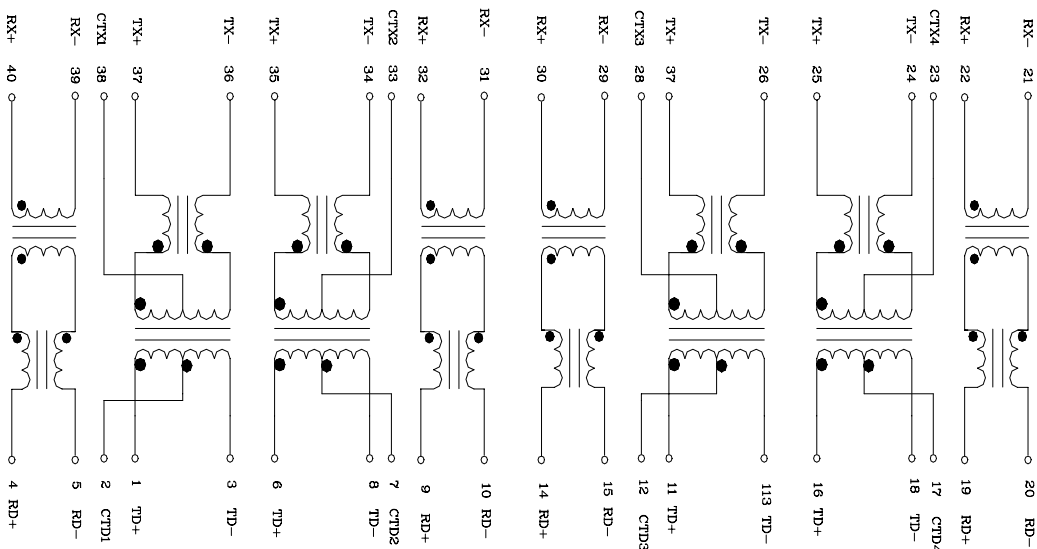
Design for 1:1 turn ratio on TX side

Schematic

S-3



S-4

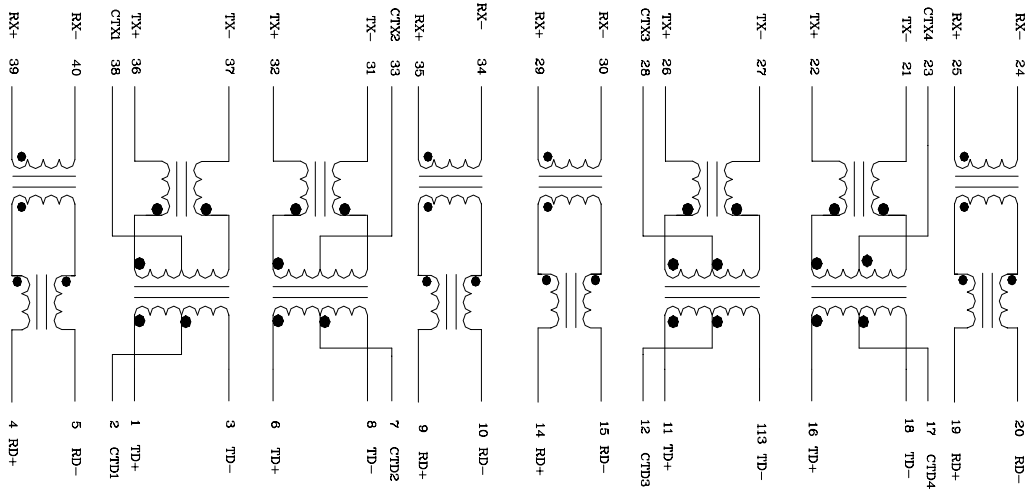


SPEC LIN

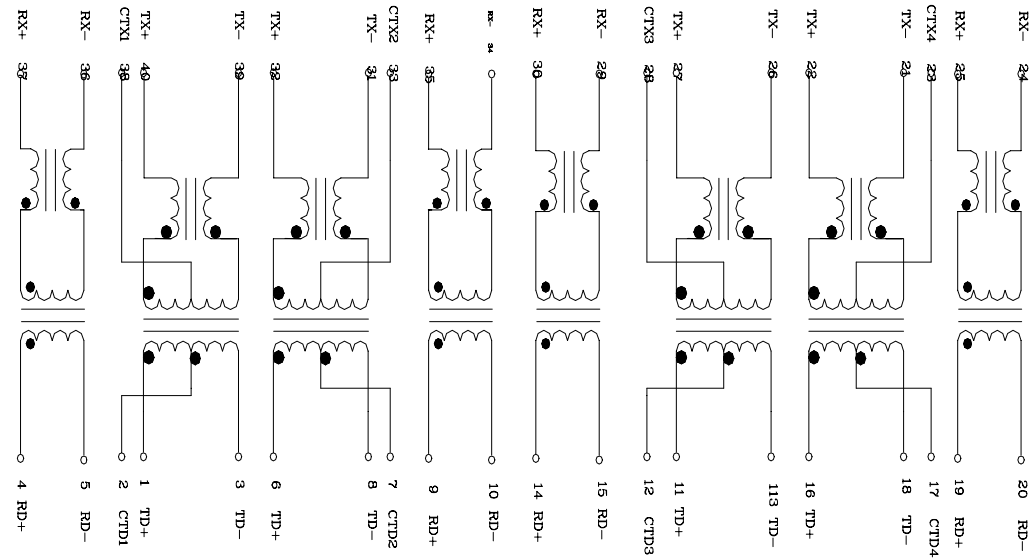
Single 10/100Base-TX Transformer Design for 1:1 turn ratio on TX side

Schematic

S-5



S-6



SPECLIN

Quad 10Base-T/100Base-TX Transformer Design for varied turn ratio on TX side

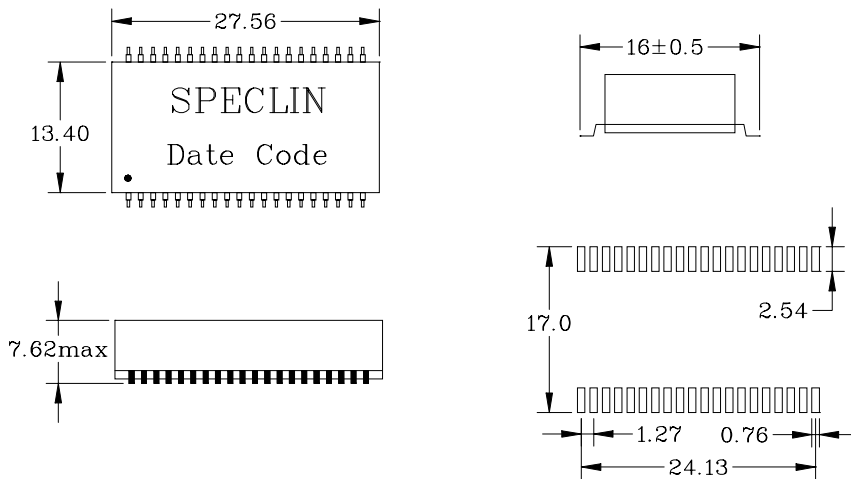


- ◆ Designed to meet IEEE802.3u requirement.
- ◆ Primary inductance 350 μ H min.with 8mA DC Bias
- ◆ Designed to meet IR 235°C peak requirement.
- ◆ 1500Vrms Isolation.

Electrical Characteristic @25°C

Model No.	Turn Ratio TX/RX	Insertion Loss dB Typ 0.1-100MHz	Return Loss dB 30/60/80MHz	Crosstalk dB Typ	Schematic
HT40S401	1:1.141/1:1	1.0	-16/note/-10	-40/38	S-1
HT40S402	1:1.414/1:1	1.0	-16/note/-10	-40/38	S-2
HT40S403	1:1.414/1:1	1.0	-16/note/-10	-40/38	S-3
HT40S404	1.414:1/1:1	1.0	-16/note/-10	-40/38	S-2
HT40S405	1.414:1/1:1	1.0	-16/note/-10	-40/38	S-4
HT40S406	1.414:1/1:1	1.0	-16/note/-10	-40/38	S-3

Dimension: ± 0.25 mm

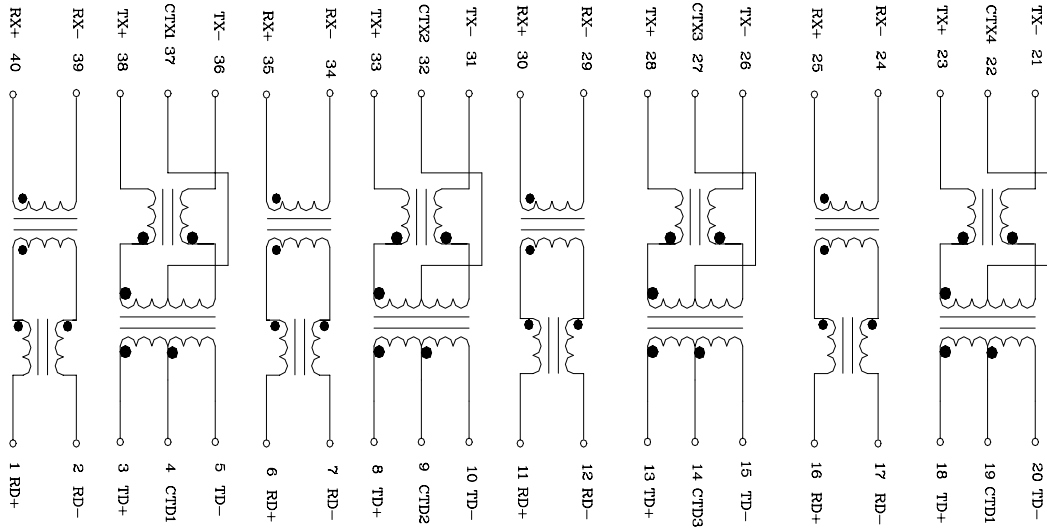


SPEC LIN

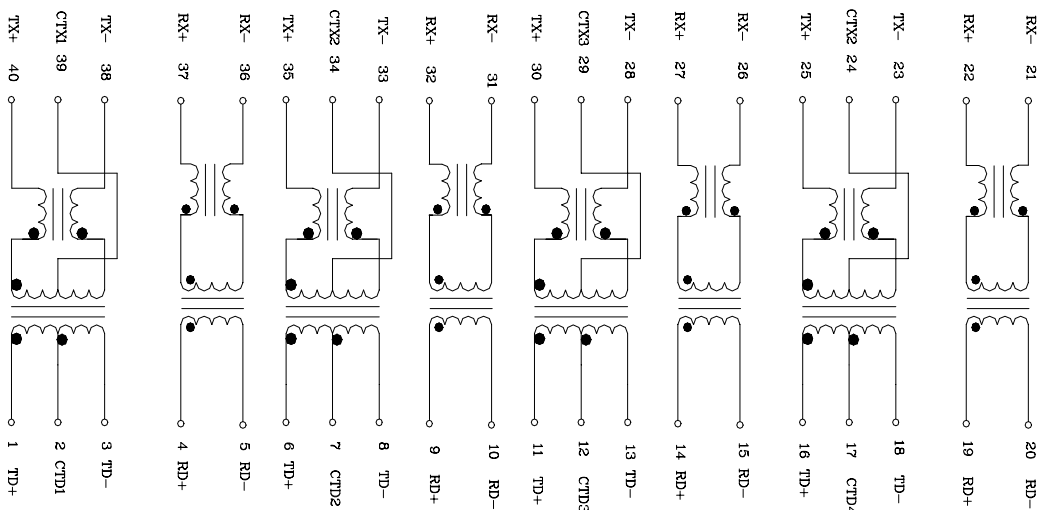
Quad 10Base-T/100Base-TX Transformer Design for varied turn ratio on TX side

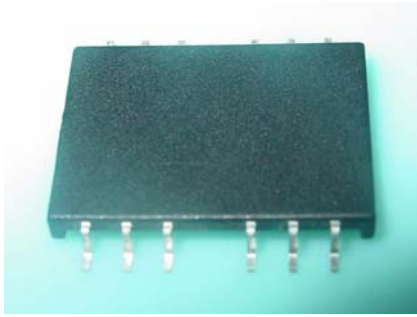
Schematic:

S-1



S-2





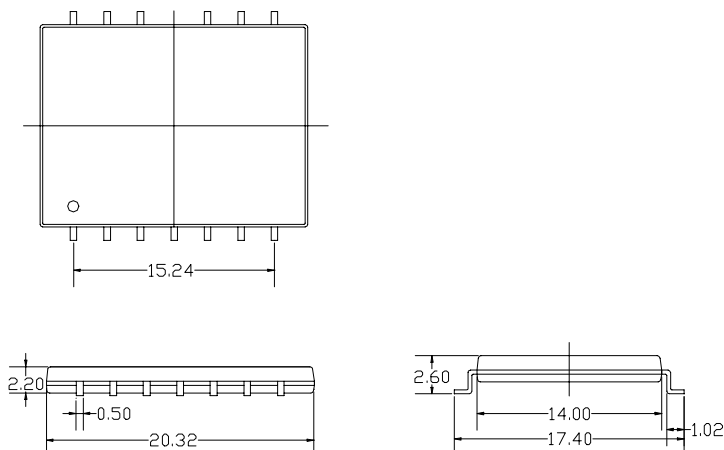
- ◆ Designed to meet IEEE802.3 requirement.
- ◆ Optimum analog solution for 10BASE-T PCMCIA Application.
- ◆ Designed to meet IR235 degree C Peak Requirement .
- ◆ Low profile SMD package

Specifications

Part No.:	Turn Ratio		Inductance With 8mA _{dc}	Insertion loss dB max	Cross talk 1-60MHz
	TX	RX			
LT14S01	1CT:1CT	1CT:1CT	350	-1.0	-40
LT14S02	1.414CT:1CT	1CT:1CT	350	-1.0	-40
LT14S03	1CT:1CT	1CT:1CT	350	-1.0	-40
LT14S04	1.414CT:1CT	1CT:1CT	350	-1.0	-40
LT14S05	1.25CT:1CT	1CT:1CT	350	-1.0	-40
LT14S06	2CT:1CT	1CT:1CT	350	-1.0	-40
LT14S07	1CT:1CT	1CT:1CT	350	-1.0	-40
LT14S08	1CT:1CT	1CT:1CT	350	-1.0	-40

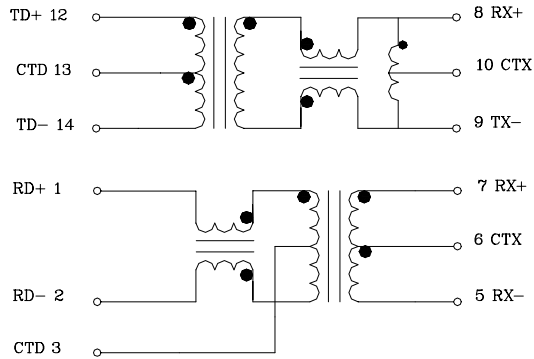
Part No.:	Return Loss			CMRR 1-100MHz	Schematic
	1-30MHz	30-60MHz	60-80MHz		
LT14S01	-16.0	Note	-10.0	-30.0	S-1
LT14S02	-16.0	Note	-10.0	-30.0	S-2
LT14S03	-16.0	Note	-10.0	-30.0	S-5
LT14S04	-16.0	Note	-10.0	-30.0	S-5
LT14S05	-16.0	Note	-10.0	-30.0	S-5
LT14S06	-16.0	Note	-10.0	-30.0	S-6
LT14S07	-16.0	Note	-10.0	-30.0	S-4
LT14S08	-16.0	Note	-10.0	-30.0	S-3

Dimension: ±0.25mm

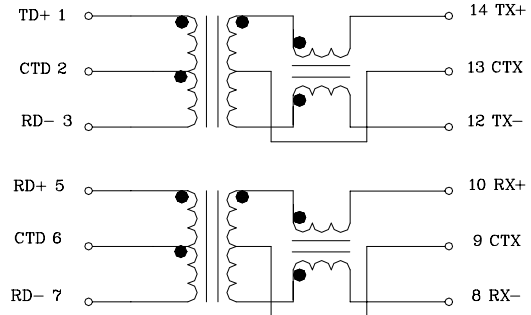


Schematic:

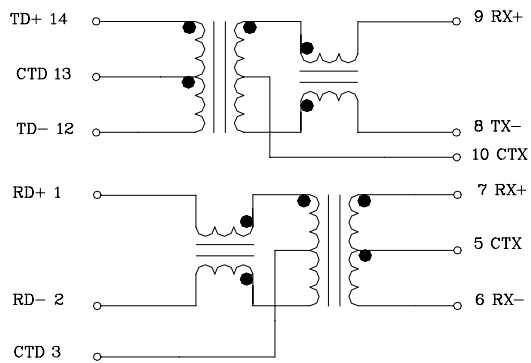
S-1



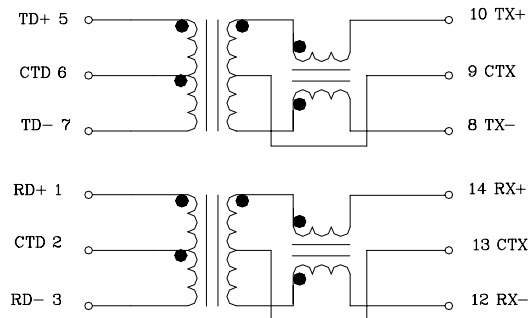
S-2



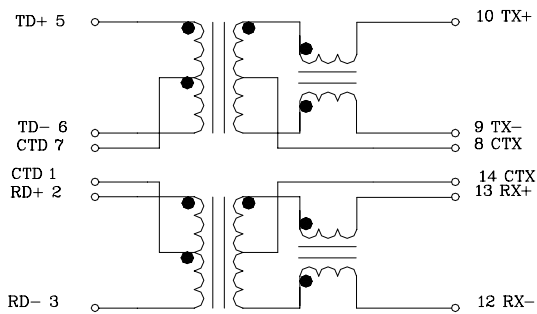
S-3



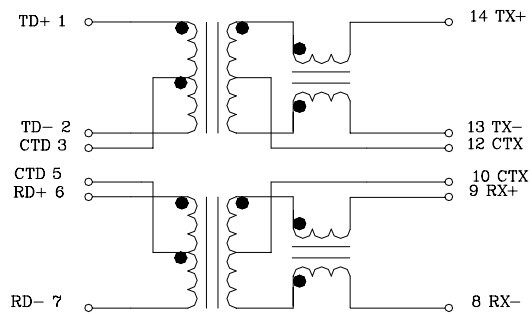
S-4



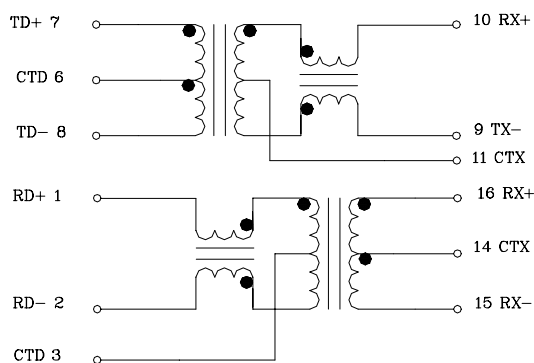
S-5



S-6



S-7



S-8

